



BISHOP
GROSSETESTE
UNIVERSITY

Theology & Religious Studies

MA



Why study at BGU?

We're one of only a handful of universities in the UK to have been awarded a TEF GOLD award for the excellent quality of our teaching

Our student accommodation has been ranked 6th in the UK by student reviews on WhatUni in a recent survey

97% of our students are in work or further study within 6 months of graduating, and our careers team will support you long after you graduate

Our self-contained campus is a safe and secure environment in which to live and study, and Lincoln is an extremely student-friendly city

Hello

CONTENTS

THEOLOGY & RELIGIOUS STUDIES AT BGU	4
MODULES	6
WHAT WE OFFER	10
YOUR FUTURE	12
WHY BGU?	14
WHAT HAPPENS NEXT?	18
WHERE ARE WE?	19

Theology & Religious Studies at BGU

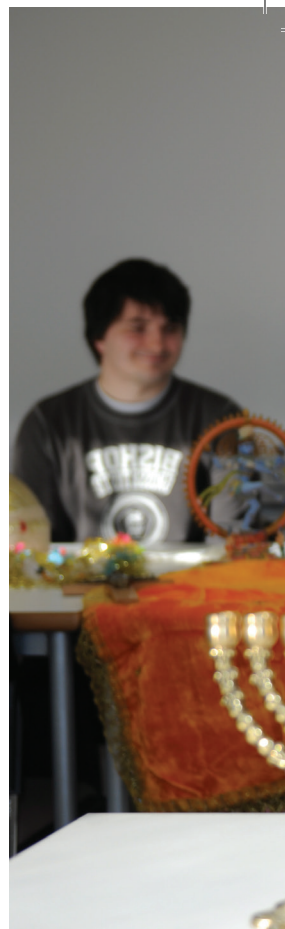
Our Theology & Religious Studies Masters course will take you on a journey from the religious worlds of the great Western traditions to the mystical world of the ancient East. It will cover the burning contemporary issues that surround Religious Studies today and delve into life's great questions. You will be able to explore the ideas and curiosity that have gripped the human race from the time we began to decorate the walls of our caves until the time we launched ourselves beyond our stratosphere and into outer space.

This course is about our world, our life and the sense we try to make of it. It is for those who are fascinated by the world of

theology and religion – whether they be for committed believers, questioning agnostics or ardent atheists. It is ideal for anyone involved in a profession which requires an understanding of religious, philosophical and ethical issues. In short, it is for anyone who wants to explore the nature of existence in the company of experts.

Our Theology & Religious Studies MA is ideal for any RE or Philosophy teacher who wants to further their expertise in their chosen subject. The knowledge and skills it promotes would also be ideal for anyone involved in a profession that requires them to deal with religious, philosophical or ethical issues.

For full details of all of our courses, including combinations, module details, entry requirements and much more, visit bishopg.ac.uk/courses





“

The extra contact with lecturers is great. I can turn up at my lecturer's office with any concern and they'll help me sort it. That's the personal touch that you get here.”

Tom

MA Theology &
Religious Studies

KEY FACTS

AWARD: Masters (MA)

DURATION: 1 year full-time,
2 years part-time

START DATE: September

TYPICAL OFFER:

Obtained, or predicted to obtain, normally an undergraduate honours degree in a Humanities or Social Science related subject (or equivalent).

INSTITUTION CODE: B38



“

The best thing about BGU is that you are part of a family, there is such a sense of family and connectedness.”

Sam

Archaeology and History

Theology & Religious Studies modules

At BGU you can study Theology & Religious Studies as a **Masters** degree, giving you an in-depth knowledge of the subject. Depending on your year of entry, options and any potential course combinations, you may study some or all of the following modules in Theology & Religious Studies at BGU.

For full details of all of our courses, including combinations, module details, entry requirements and much more, visit bishopg.ac.uk/courses

Modules

The God Question: Theism, Agnosticism and Atheism

Engage in the important and much debated issue surrounding the belief, agnosticism or non-belief in God or deities. The question of God's existence is more pertinent now than has ever been. Atheistic authors frequently populate the bestselling authors lists and their work is often prominently featured in our high street bookshops. This module will critically examine the arguments of established and contemporary atheists as well as the counter-arguments of atheists, agnostics and theists.

War of the Worlds: Religions in Conflict and Dialogue

This module will outline the often contested nature of inter-religious dialogue and faith. It presents you with the knowledge and skills necessary for exploring issues such as sectarian strife, inter-religious antagonisms and the efforts to overcome difficulties in the contemporary religious world. Additionally the role of the theologian in the writing of theology and related issues, such as recent developments and approaches to pluralism, will also be closely considered.

A Requiem for Reason: The Rise of Modern Fundamentalism

The purpose of this module is to engage you in perhaps the most important religious issue of our time: that is the rise of religious fundamentalism in all parts of the globe. You will explore and evaluate the responses of the academic world to this development as you try to explain its rise and deal with its manifestations.

Theology in Fiction, Film and Fantasy


This is a module that addresses an area of theology that is increasingly growing in importance. Academics have long recognized that the world of fiction is a vast repository of theological exploration and in film, TV programmes and novels we may encounter profound treatments of the subject. This module will ensure that the programme is comprehensive in its treatment of theological expressions.

On the Shoulders of Giants: Great Religious Thinkers from Plato to Pannenberg

This module will provide an essential foundation for further study in Theology and Religious Studies by examining key contributions from the great thinkers of the Eastern and Western traditions. It will set out the character and scope of Theology and Religious Studies and will challenge you to critically review its practice through a series of case studies of great thinkers such as Plato, Confucius, W. G. Frazer, Gandhi and William James.

Dissertation

You will, with tutorial supervision, engage in an independent piece of theological research on a subject of your choosing. You will be required to devise and undertake a substantial written dissertation on a subject of interest to you. The module will thereby deepen and refine your knowledge of your specialist area within the context of a longer piece of analytical written work.



Our range of Masters courses at BGU are designed to build upon your undergraduate study and fully enhance your subject knowledge in specific areas. They're perfect for if you want to carry on your studies after completing a Bachelors degree, or learn even more about a particular subject. We've recently added a whole host of new courses to our Masters portfolio, giving you a wider selection of courses to choose from than ever before.

You can find out more about all our Masters courses at www.bishopg.ac.uk/masters

“

For me, the city helped me choose BGU. It's only a 10 minute walk into town and I like the culture here - I think it's a good student city.”

Tom

MA Theology &
Religious Studies



What we offer

Delivery

There is no one-size-fits-all method of teaching at BGU – we shape our methods to suit each subject and each group, combining the best aspects of traditional university teaching with innovative techniques to promote student participation and interactivity.

You will be taught in a variety of ways, from lectures, tutorials and seminars, to practical workshops, coursework, work-based placements or even field visits. Small group seminars and workshops will provide you with an opportunity to review issues raised in lectures, and you will be expected to carry out independent study.

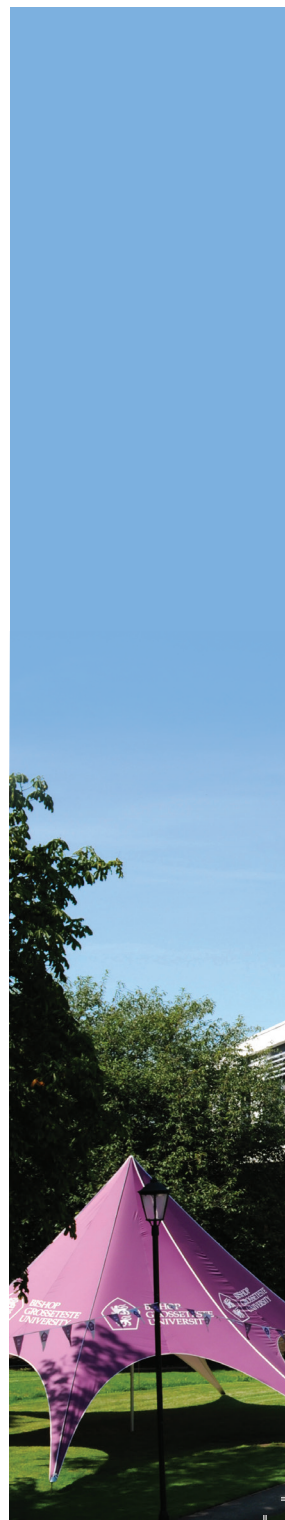
Placements are a key part of degree study at BGU. They provide an enriching learning experience for you to apply the skills and knowledge you will gain from your course and, in doing so, give valuable real-world experience to boost your career.

Assessment

Assessment will take place on our modules via a variety of forms including essays, presentations and portfolios. It also includes a final dissertation which allows you to become a real expert in a theological topic that particularly fascinates you.

Support

Studying at BGU is a student-centred experience. Staff and students work together in a friendly and supportive atmosphere as part of an intimate campus community. You will know every member of staff personally and feel confident approaching them for help and advice, and staff members will recognise you, not just by sight, but as an individual with unique talents and interests. We will be there to support you, personally and academically, from induction to graduation.





“

I felt the
university had a
calming feeling,
it almost felt like
home which I
loved and knew
I would settle
right in.”

Cameron

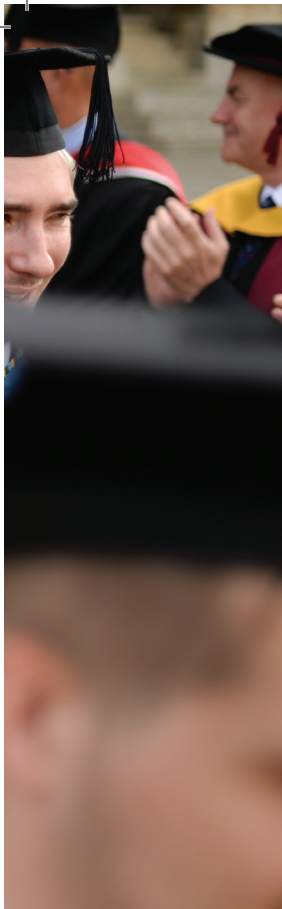
Primary Education
with QTS



Your future

Our students have excellent rates of employability when they graduate from BGU, which is great news for you as it means that you can study for a degree knowing that your future is in safe hands. Our employability rates are extremely important to us here at BGU, which is why we offer placement opportunities as an integral part of our courses.

This would be an excellent programme for anyone wanting to pursue a career in any area of religious or philosophical education, including teaching at a Primary, Secondary or Higher level. It would also be a very useful degree to take into social work, counselling, clerical life, youth work, or work within the heritage sector.



Take a look at
what qualities
and skills you'll
develop as a
BGU student
[bishopg.ac.uk/
graduate-attri
butes](https://bishopg.ac.uk/graduate-attributes)

“

I know that when the time draws nearer, BGU has a tremendous array of people I can talk to about my future who will have great advice and help me to come to the right decision. Since BGU has such a high employment rate for graduates, I know that whatever I choose to do BGU will help and support me in getting that role.”

Rebecca

History



Why BGU?

Here at BGU we've been providing first-class education to students for over 150 years. We're based in the heart of historic Lincoln, a beautiful and extremely student-friendly city.

Navigating around Lincoln on foot is simple, from the cobbled streets uphill to the modern city centre and waterfront downhill.

We're located uphill on an attractive, leafy campus just a few minutes' walk from Lincoln's medieval Cathedral, Castle and Bailgate area.

With plenty of live entertainment, cultural attractions and nightlife hotspots, there's plenty to keep you entertained, uphill and downhill.

Visit [bishopgates.ac.uk/lincoln](https://www.bishopgates.ac.uk/lincoln) to find out what's on offer in Lincoln.



“

BGU was always my first choice when considering universities. Everything about it is beautiful, from the leafy green trees to red brick buildings – and everything on the inside is just amazing.”

Sian

English Literature

As a single-site campus, just about everything you need is close by, whether it be your tutors, your friends, your lectures or the places in which you like to relax.

Our students are some of the happiest in the UK, which is incredibly important to us. We really care about our students and aim to support them all of the way through their studies, from application to graduation.

People often say that there's something special about BGU, that the people really care. There's a warm and friendly feel to life here, and we do everything possible to look after our students however we can.

Studying as part of a close-knit community, you'll get to know staff personally and feel confident in being able to approach them for help and

Explore what we have to offer on our campus at bishopg.ac.uk/campus

“

I came here on an Open Day and really loved it. My first impression at the Open Day was that I really liked it because it was smaller – you go to some universities and they are really massive, scary big city campuses, but here I felt really comfortable.”

Hayley
Education Studies



advice. Staff will recognise you - not just by sight but as an individual with unique talents, interests and needs. We'll be there to support you, academically and personally, from the day you start until long after you leave.

Life after BGU is extremely important and we offer many different methods

of support for your future career. This, alongside our talented graduates, is one of the reasons that we consistently achieve impressive employability figures.

This is great news for you as you'll be able to study at BGU knowing that your education is in safe hands!

There's no better way to really get a feel for what BGU has to offer than by coming to visit us. To book your place now visit **bishopg.ac.uk/opensdays**



The family feel is exactly why people should study at BGU. BGU becomes your home regardless of your age or background. In fact, I felt such a connection with the University on my first visit that I went to five Open Days before I started my BA. I wanted to be part of BGU straight away and I know it will stay with me forever.”

Kate

Drama in the Community
& MA in Education

What happens next?

Open Days

So you've found a course you're interested in - what next? We feel very strongly that coming along to visit us on an Open Day is the very best way to find out everything about BGU.

A BGU Open Day is designed with you in mind, to give you a taste of what it's like to live, study and work here. We try to make everything as easy as possible for you, so you can relax and enjoy the day. You'll have the chance to explore the campus and surrounding area,

Speak to members of academic staff about the courses you're interested in, look around our accommodation, and get any questions you may have answered.

Book your place on our next Open Day now - visit **www.bishopg.ac.uk/opendays**

If you think you'd like to apply, need more information or just want to speak to somebody about your options, contact our Enquiries team by calling **01522 583658** or emailing **enquiries@bishopg.ac.uk**




Ready to apply? Brilliant. We can't wait to receive your application! For the majority of our MA courses you will apply through the relevant course page on our website. Simply click on the '**Apply Now**' button to download a form – visit **www.bishopg.ac.uk** for all the information you will need. And don't worry – if you need help with anything, we're here to assist. Our dedicated team are ready to answer your queries and questions.

The contents of this booklet are correct at the time of going to print (January 2020). For full and up-to-date information on all of our courses, visit **bishopg.ac.uk**

Where are we?



Airports close to BGU

-  Humberside
-  Doncaster
-  Nottingham East Midlands

Where	Road	Rail
Sheffield	55 miles	1hr 20m
Nottingham	39 miles	55m
Leeds	77 miles	2hrs
York	69 miles	1hr 45m
London	144 miles	2hrs

BISHOP GROSSETESTE UNIVERSITY
LONGDALES ROAD
LINCOLN
UNITED KINGDOM
LN1 3DY

www.bishopg.ac.uk

Telephone: (01522) 583658

enquiries@bishopg.ac.uk

“

I'd say the best thing
about BGU for me
is the course. I was
never good at exams
and I hated school
all the way through,
but now I've come to
university I've been
much happier and I've
done better than I ever
thought possible.”

Georgina
Theology

@BGULincoln

