



BISHOP  
GROSSETESTE  
UNIVERSITY

# Education Studies

BA (Hons)



# Why study Education Studies at BGU?

Education Studies is highly practical degree, teamed with the theory you will need to succeed. Gain up to 9 weeks of experience within work-based placements.

---

Provides invaluable classroom practice and flexible opportunities to experience other educational settings.

---

Choose from multiple degree combinations, allowing you to keep your career pathway open. Whilst also being excellent preparation for PGCE courses.

---

BGU have over 150 years of experience in education and uphold an excellent and long-standing national reputation within the field.



# Hello

## CONTENTS

<b>EDUCATION STUDIES AT BGU</b>	<b>4</b>
<b>MODULES</b>	<b>6</b>
<b>WHAT WE OFFER</b>	<b>10</b>
<b>YOUR FUTURE</b>	<b>12</b>
<b>WHY BGU?</b>	<b>14</b>
<b>WHAT HAPPENS NEXT?</b>	<b>18</b>
<b>WHERE ARE WE?</b>	<b>19</b>

# Education Studies at BGU

Studying Education Studies at BGU will provide you with an excellent understanding of education in its widest sense, nationally and globally, and is a great choice if you are interested in a career in teaching or are thinking about working in other education-related areas.

It will provide you with a deep and reflective knowledge and understanding of contemporary issues in education directly related to everyday practice. You'll debate education policy, find out more about the drivers of educational change in England today and critically consider different

approaches to schools and schooling, both within the UK and globally.

A key feature of Education Studies is a focus on you as a developing practitioner. You will be encouraged to develop a strong personal ideology of education and will be supported in the development of secure employability skills through our work-based placements. A number of core modules each year incorporate placements in schools or other education-related settings and carefully structured placement tasks will ensure that you gain valuable first-hand practical experience.

For full details of all of our courses, including combinations, module details, entry requirements and much more, visit [bishopg.ac.uk/courses](https://bishopg.ac.uk/courses)







“

Placements are definitely the best part of the course for me. It's the first time I've had the opportunity to teach younger children (or even been in a classroom to teach). I've been teaching 7 year olds and its brilliant, I love teaching them - they're at the age where they have an interest in everything. It's nice putting theory to practice.”

**Gareth**  
Education Studies

## KEY FACTS

**AWARD:** BA (Hons)  
Single or Joint Honours

**DURATION:** 3 years full-time

**START DATE:** September

**TYPICAL OFFER:**  
96 – 112 UCAS tariff points

**INSTITUTION CODE:** B38



The lecturers and support staff are always the most helpful and amazing people. They are always willing to answer my rather long list of questions. The CELT team are incredible at breaking down assignments and helping you write academically. The support they give is invaluable.”

**Holly**  
Education Studies

# Education Studies modules

At BGU you can study Education Studies as a **single** or **joint** honours degree, giving you an in-depth knowledge of the subject. Depending on your year of entry, options and any potential course combinations, you may study some or all of the following modules in Education Studies at BGU.

For full details of all of our courses, including combinations, module details, entry requirements and much more, visit [bishopg.ac.uk/courses](http://bishopg.ac.uk/courses)

# Year 1

## Perspectives on Learning

You will be introduced to a range of major educational theorists and philosophers concerned with child development and learning, including Watson, Skinner, Piaget and Vygotsky, and the significant contributions of each. You will discuss and reflect upon your growing awareness of the developing child within the educational system and wider society, and of your own learning.

## Pupils, Schools and Society

During this module, you will be introduced to the nature and purpose of education and some sociological and ideological frameworks. You will explore theories, issues and ideas concerning teaching and learning in contemporary classrooms, including the study of key factors affecting learning, such as ethnicity, gender and socio-economic status and the role of self-esteem and motivation.

## The Brains Behind It: Concepts of Intelligence

This module will introduce you to the study of Intelligence in its widest sense from historical, social and individual development perspectives. You will be introduced to some of the major contributors in the study of Intelligence and will examine potential controversies in how intelligence can be nurtured and applied in contemporary education.

## Wellbeing and Resilience

During this module, you will be introduced to differing issues and debates around childhood, wellbeing and resilience. You will examine a range of factors that impact on the wellbeing of children and young people drawing on contemporary literature.



## Year 2

### **Inclusion and Diversity**

This module will introduce you to theories and ideologies of inclusive practice and will explore interpretations of diversity and inclusion in different contexts. You will undertake an examination of the implementation of education and social policies in practice in order to understand how adapted provision can meet a diverse range of needs within society.

### **From Vision to Reality?**

In this module, you will explore key ideologies in the development of educational ideas including Romantic and contemporary perspectives on innovative approaches to pedagogy. You will also investigate the nature of education and how it is studied, including education as a theoretical, social and cultural construct.

### **Professional Contexts**

This module will provide you with an experience of the world of work in the form of a placement or work experience. It will enable you to apply knowledge and skills in a real-life context offering you a valuable experience to draw on when presenting yourself to employers or selectors after graduating.

### **Thinking through Pedagogy**

This module will draw on key contemporary international, national and comparative research focused on the art, craft and science of pedagogy. You will build on the understanding of learners and learning, developed through first year modules and critically examine a range of views of effective pedagogical practice drawn from research.

### **Education in a Digital Era**

You will be introduced to perspectives underpinning the use of digital literacy, including contemporary research concerning the use of mobile digital technology in a range of educational settings. This module will introduce a range of critical and pedagogical debates, theories and practical issues that emerge from this subject area.

### **An Introduction to the World of Research**

The module explores the breadth, depth and scale of contemporary educational research and consider the relevance to the development of the policy and practice of education, both globally and internationally. A broad introduction to qualitative and quantitative methods and their use in published research will be provided, which will set the context for further study.

## Year 3

### **A 21st Century Curriculum**

This highly responsive module provides you with a theoretical and critical understanding of key considerations in the development and implementation of curriculum policy, content and practice in schools today together with an appreciation of innovative practice in this area. It provides you with an opportunity to study this at first hand in placement settings.

### **International Dimensions**

During this module, you will explore a number of examples that illustrate issues in development education and global citizenship, examining the cultural and political contexts. You will also be introduced to international dimensions of education, as manifest in different countries, and explore global dimensions to the curriculum.

### **Dissertation or Independent Study**

You will be guided in the construction of an appropriate methodology and tutorials will support the generation of appropriate research question(s), which will drive the collection of relevant primary and secondary data, information and opinion along organized lines of enquiry. You will more fully understand the opportunities in advanced independent study, further defining and drawing upon your particular style of learning.

### **Contexts for Learning**

You will explore ideas and issues concerning formal and informal education and the role and scope of education (in its broadest sense) in a variety of learning contexts. A range of educational opportunities extending beyond conventional classrooms will be practically examined and the opportunities and provision for the inclusion of a diverse range of learners critically considered.

### **Inspiring Learning: Readin', Ritin' and Revellin'**

This module builds on your previous experiences of educational placements and your knowledge of curriculum policy, pedagogy and practice to focus on the influence of language and literacy on learning. It will provide you with an understanding of the theoretical and research background to the development of language and literacy at different stages of education.



# What we offer

## Delivery

There is no one-size-fits-all method of teaching at BGU – we shape our methods to suit each subject and each group, combining the best aspects of traditional university teaching with innovative techniques to promote student participation and interactivity.

You will be taught in a variety of ways, from lectures, tutorials and seminars, to practical workshops, coursework and work-based placements. Small group seminars and workshops will provide you with an opportunity to review issues raised in lectures, and you will be expected to carry out independent study.

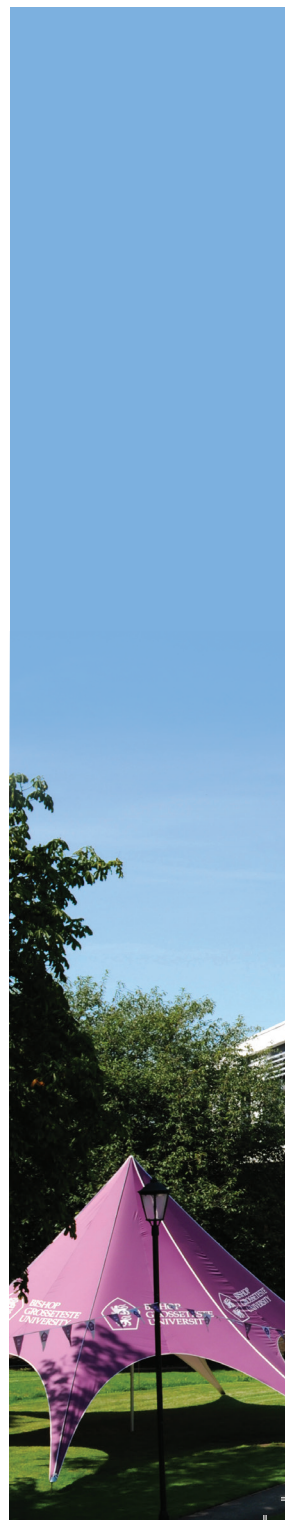
Placements are a key part of degree study at BGU. They provide an enriching learning experience for you to apply the skills and knowledge you will gain from your course and, in doing so, give valuable real-world experience to boost your career.

## Assessment

We recognise that individuals come from a wide range of backgrounds and experiences, so we use a variety of assessment strategies on our courses.

In Education Studies, assessment is carried out through coursework of different types, including essays, reports, oral presentations, multimedia presentations, reflective logs and portfolios. There are no examinations. You can expect to give one or two oral presentations or poster presentations as one of a small group of students throughout the course.

You will gradually build up skills of multimedia presentation and third-year students currently present a short, assessed multimedia film to their peers. You will build up your writing skills steadily throughout the course and in the first year, you will complete a portfolio





of shorter written pieces and two longer essays, receiving formative feedback from your tutors to help you build up your academic capabilities.

### **Support**

Studying at BGU is a student centred experience. Staff and students work together in a friendly and supportive atmosphere as part of an intimate campus community. You will know every member of staff personally and feel confident approaching them for help and advice, and staff members will recognise you, not just by sight, but as an individual with unique talents and interests. We will be there to support you, personally and academically, from induction to graduation.

“

**I felt the university had a calming feeling, it almost felt like home which I loved and knew I would settle right in.”**

**Cameron**

Primary Education  
with QTS



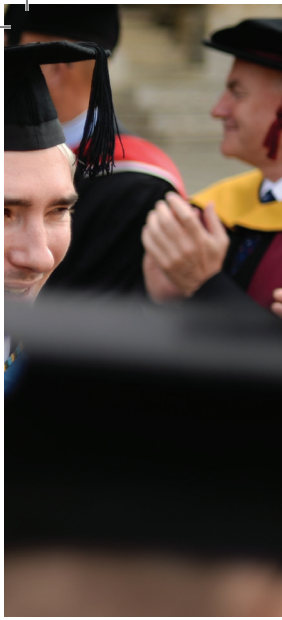


# Your future

Our students have excellent rates of employability when they graduate from BGU, which is great news for you as it means that you can study for a degree knowing that your future is in safe hands. Our employability rates are extremely important to us here at BGU, which is why we offer placement opportunities as an integral part of our courses.

Education Studies graduates enjoy very high levels of employability – the course facilitates your personal and professional employability skills through regular work based placements – and our students are in high demand. Currently, around 70% of our students

complete a teacher training course and will go on to be highly successful Primary or Secondary teachers. An Education Studies degree from BGU means your career opportunities are diverse. In addition to careers in education, Education Studies graduates are well placed to work in other education related, health, social care, public information or communication sectors. The course provides good training for a role within business, service industries, personnel, museums, galleries or charities. The diverse nature of this course will also enable you to go on to further study such as postgraduate study on a masters degree.



Take a look at  
what qualities  
and skills you'll  
develop as a  
BGU student  
[bishopg.ac.uk/  
graduate-attri  
butes](https://bishopg.ac.uk/graduate-attributes)

“

My plans for the future are always changing and BGU offers so many options for experience in different types of educational settings. BGU has great contact with local schools for opportunities to work in the classroom or hear from experienced teachers in lectures. I love being able to go into schools which are completely different from my own education as it gives you a whole new perspective.”

**Holly**

Education Studies





## Why BGU?

Here at BGU we've been providing first-class education to students for over 150 years. We're based in the heart of historic Lincoln, a beautiful and extremely student-friendly city.

Navigating around Lincoln on foot is simple, from the cobbled streets uphill to the modern city centre and waterfront downhill.

We're located uphill on an attractive, leafy campus just a few minutes' walk from Lincoln's medieval Cathedral, Castle and Bailgate area.

With plenty of live entertainment, cultural attractions and nightlife hotspots, there's plenty to keep you entertained, uphill and downhill.

Visit [bishopg.ac.uk/lincoln](https://www.bishopg.ac.uk/lincoln) to find out what's on offer in Lincoln.



“

BGU was always my first choice when considering universities. Everything about it is beautiful, from the leafy green trees to red brick buildings – and everything on the inside is just amazing.”

**Sian**

English Literature

As a single-site campus, just about everything you need is close by, whether it be your tutors, your friends, your lectures or the places in which you like to relax.

Our students are some of the happiest in the UK, which is incredibly important to us. We really care about our students and aim to support them all of the way through their studies, from application to graduation.

People often say that there's something special about BGU, that the people really care. There's a warm and friendly feel to life here, and we do everything possible to look after our students however we can.

Studying as part of a close-knit community, you'll get to know staff personally and feel confident in being able to approach them for help and

Explore what we have to offer on our campus at [bishopg.ac.uk/campus](https://bishopg.ac.uk/campus)

“

I came here on an Open Day and really loved it. My first impression at the Open Day was that I really liked it because it was smaller – you go to some universities and they are really massive, scary big city campuses, but here I felt really comfortable.”

**Hayley**  
Education Studies



advice. Staff will recognise you - not just by sight but as an individual with unique talents, interests and needs. We'll be there to support you, academically and personally, from the day you start until long after you leave.

Life after BGU is extremely important and we offer many different methods

of support for your future career. This, alongside our talented graduates, is one of the reasons that we consistently achieve impressive employability figures.

This is great news for you as you'll be able to study at BGU knowing that your education is in safe hands!

There's no better way to really get a feel for what BGU has to offer than by coming to visit us. To book your place now visit **bishopg.ac.uk/opensdays**





The family feel is exactly why people should study at BGU. BGU becomes your home regardless of your age or background. In fact, I felt such a connection with the University on my first visit that I went to five Open Days before I started my BA. I wanted to be part of BGU straight away and I know it will stay with me forever.”

**Kate**

Drama in the Community  
& MA in Education

# What happens next?

## Open Days

So you've found a course you're interested in - what next? We feel very strongly that coming along to visit us on an Open Day is the very best way to find out everything about BGU.

A BGU Open Day is designed with you in mind, to give you a taste of what it's like to live, study and work here. We try to make everything as easy as possible for you, so you can relax and enjoy the day. You'll have the chance to explore the campus and surrounding area,

Speak to members of academic staff about the courses you're interested in, look around our accommodation, and get any questions you may have answered.

Book your place on our next Open Day now - visit **www.bishopg.ac.uk/opendays**

If you think you'd like to apply, need more information or just want to speak to somebody about your options, contact our Enquiries team by calling **01522 583658** or emailing **enquiries@bishopg.ac.uk**




**Ready to apply?** Brilliant. We can't wait to receive your application! For the majority of our courses you will apply through UCAS – visit **www.bishopg.ac.uk** for all the information you will need. And don't worry – if you need help with anything, from UCAS scores to personal statements, we're here to help. Our dedicated team are ready to answer your queries and questions.

The contents of this booklet are correct at the time of going to print (January 2020). For full and up-to-date information on all of our courses, visit **bishopg.ac.uk**

# Where are we?



## Airports close to BGU

-  Humberside
-  Doncaster
-  Nottingham East Midlands

Where	Road	Rail
Sheffield	55 miles	1hr 20m
Nottingham	39 miles	55m
Leeds	77 miles	2hrs
York	69 miles	1hr 45m
London	144 miles	2hrs

BISHOP GROSSETESTE UNIVERSITY  
LONGDALES ROAD  
LINCOLN  
UNITED KINGDOM  
LN1 3DY

[www.bishopg.ac.uk](http://www.bishopg.ac.uk)

Telephone: (01522) 583658

[enquiries@bishopg.ac.uk](mailto:enquiries@bishopg.ac.uk)

“

I'd say the best thing  
about BGU for me  
is the course. I was  
never good at exams  
and I hated school  
all the way through,  
but now I've come to  
university I've been  
much happier and I've  
done better than I ever  
thought possible.”

Georgina  
Theology

@BGULincoln

