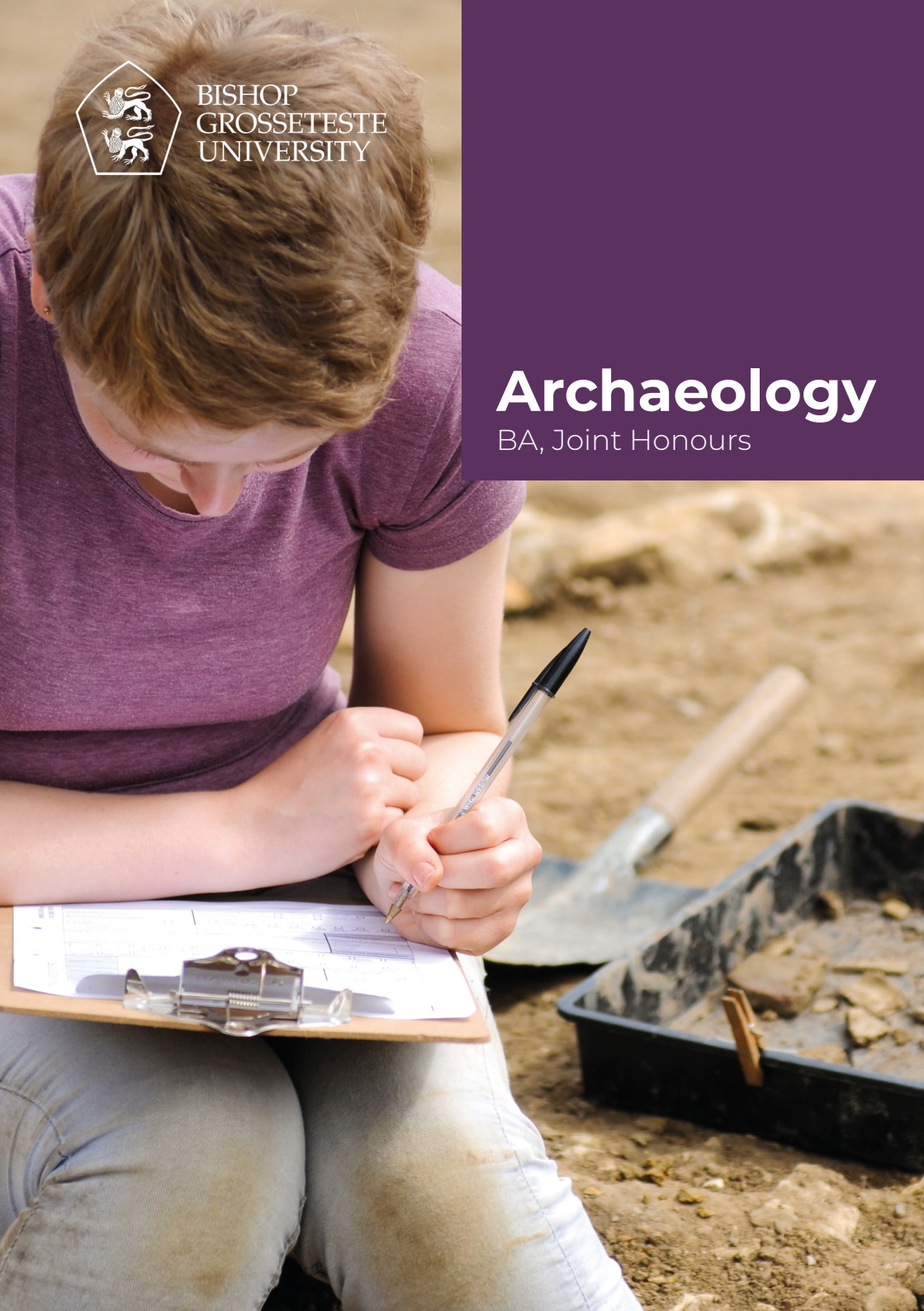




BISHOP
GROSSETESTE
UNIVERSITY

Archaeology

BA, Joint Honours



Why study Archaeology at BGU?

Get hands on, it's not just an academic course. You'll participate in fieldwork and gains skills in, – excavation, survey, processing and analysis of finds.

BGU has an institutional specialism and focus on social and cultural history, making this different from most archaeology degree courses.

This course will help you develop into a highly employable graduate. Professional archaeologists are currently in incredibly high demand both regionally and nationwide.

What better place to study Archaeology than historic Lincoln? You will have thousands of years of history on your doorstep, ranging from Roman to Victorian, medieval to wartime and beyond.



Hello

CONTENTS

ARCHAEOLOGY AT BCU	4
MODULES	6
WHAT WE OFFER	10
YOUR FUTURE	12
WHY BCU?	14
WHAT HAPPENS NEXT?	18
WHERE ARE WE?	19

Archaeology at BGU

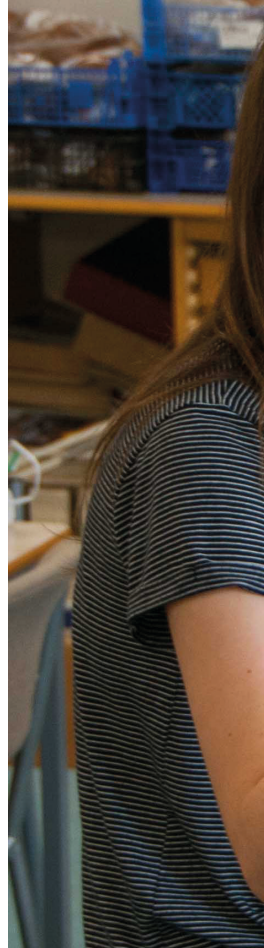
Studying Archaeology is ideal if you're fascinated by both the ancient and more recent past and if you want to explore and investigate the material remains of previous societies and cultures. It will allow you to get hands-on with the past and explore civilizations and people from throughout history, in a practical and interesting way.

Throughout the course, you will have the chance to study material from prehistory through to Roman and Medieval times as well as exploring contemporary archaeology. In addition to studying archaeological evidence from these different periods, you will also explore key ideas and current issues, such as archaeological method and theory, landscape archaeology and practice in the commercial heritage sector.

Not only will you gain the practical skills to undertake archaeological fieldwork, including excavation, surveying, and post-excavation studies, you'll also strengthen key transferable skills, such as analysing data, assessing evidence, presenting your views and constructing arguments using critical reasoning.

Employability is important to us at BGU, and as part of the course you will have the chance to take a work-based placement at a relevant commercial unit, heritage practice or museum, or the exciting opportunity to join the annual BGU training and research excavation – where you can put into practice your newly developed skills.

For full details of all of our courses, including combinations, module details, entry requirements and much more, visit [bishopg.ac.uk/courses](https://www.bishopg.ac.uk/courses)





At the moment I am specifically enjoying the module focusing on prehistoric archaeology - that's what I enjoy the most. I've been on a few trips already with the course, with the best one being out into the field looking at earth works - it just opened our eyes. Looking at it in situ was the best thing I've ever experienced -that was my best moment of BGU so far."

Sam

Archaeology and History

KEY FACTS

AWARD: BA (Hons)
Joint Honours

DURATION: 3 years full-time

START DATE: September

TYPICAL OFFER:
96 – 112 UCAS tariff points

INSTITUTION CODE: B38



“

The best thing about BGU is that you are part of a family, there is such a sense of family and connectedness.”

Sam

Archaeology and History

Archaeology modules

At BGU you are able to study Archaeology as a **joint** honours degree with History, giving you an in-depth knowledge of both subjects. Depending on your year of entry, options and any potential course combinations, you may study some or all of the following modules in Archaeology at BGU.

For full details of all of our courses, including combinations, module details, entry requirements and much more, visit bishopg.ac.uk/courses

Year 1

Introduction to Archaeology: Concepts and Methods

This module will allow you to consider key areas of theory and practice, such as: The origins and character of archaeology as an academic discipline, the approaches taken to data gathering and analysis by archaeologists, and the relationship between theory and interpretation. You will be introduced to a number of core practical skills required of archaeologists in both field and laboratory settings.

Prehistoric and Roman Britain

This module will investigate evidence for social, economic and cultural life, and will include the study of significant sites, themes and events. You will typically cover topics such as prehistoric social structures and economy, prehistoric and Roman funerary practices, military aspects of the Roman conquest and the end of imperial rule in Britain.

Year 2

Living and Dying in Medieval Europe

You will study aspects of the archaeology of medieval Europe, and through comparative study understand Britain's archaeology within this context. You will investigate the evidence for European political and social structures, economic and cultural networks, and include the study of the archaeological evidence for everyday life and the rituals of death.

Archaeological Field School

You will study and experience aspects of the identification, recording, excavation and post-excavation of archaeological evidence through a live excavation project. You will gain a thorough practical knowledge of the methods and techniques used by archaeologists to survey, record and excavate archaeological features.

Field Archaeology: People, Place and Practice

In this module, you will study the inter-relationship between the contemporary world and the archaeological evidence for the past, including aspects of the identification, recording, management and interpretation of archaeology in both national and international contexts. This includes a consideration of archaeological project management and, more specifically, investigative/excavation strategy and decision making.

Year 3

Conflict Archaeology in Global Context

During this module you will undertake a wide-ranging critical study of the disciplinary area of conflict archaeology, with specific case studies taken from a number of differing chronological and geographical contexts. Consideration will be given to the methodologies of practice, analysis and interpretation that characterise this archaeological sub-discipline, from fieldwork through standing building recording, to critical artefact studies.

Independent Study Project

This independent study project module is an opportunity for you to explore selected themes and issues in the thinking and practice in archaeology. Initial discussion and advice will help you in the selection of an archaeological theme or topic for your study.

Material Culture in Archaeology: Theory & Practice

This module provides a critical approach to the study of archaeological artefacts from both an applied and theoretical perspective. You will make use of a variety of artefacts and assemblages, both excavated finds and from reference collections, to engage in laboratory-based processes of analysis and conservation.

Dissertation

This module requires you to devise and undertake a substantial research-based dissertation on a subject of interest to yourself, and to prepare in written form an abstract and working bibliography. You will conduct your research through self-formulated questions, supported by the acquisition of appropriate archaeological data and construct complex and sophisticated arguments to support the premise of your research question.





“

The thing that makes the course here at BGU better is the fact that I know who my tutors are. I can speak to them, they know my name and I can have a discussion with them. No matter when I need to talk to them, I feel like they are always available.”

Sam

Archaeology and History

What we offer

Delivery

There is no one-size-fits-all method of teaching at BGU – we shape our methods to suit each subject and each group, combining the best aspects of traditional university teaching with innovative techniques to promote student participation and interactivity.

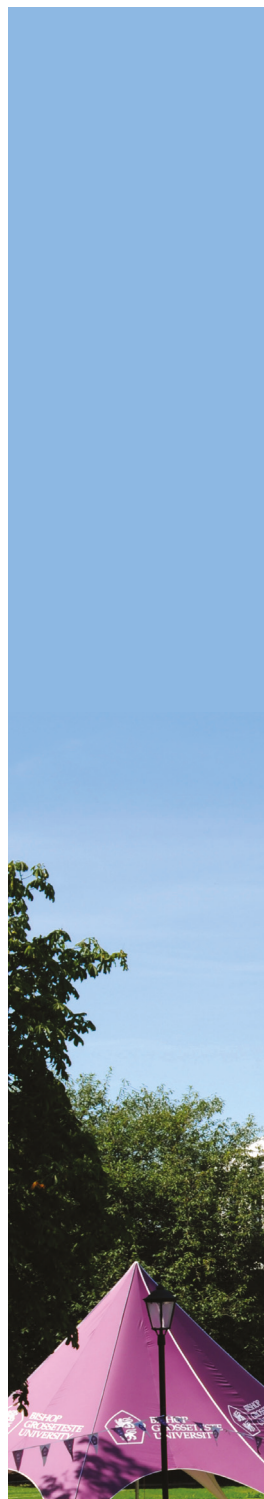
You will be taught in a variety of ways, from lectures, tutorials and seminars, to practical workshops, coursework, work-based placements or even field visits. Small group seminars and workshops will provide you with an opportunity to review issues raised in lectures, and you will be expected to carry out independent study.

Placements are a key part of degree study at BGU. They provide an enriching learning experience for you to apply the skills and knowledge you will gain from your course and, in doing so, give valuable real-world experience to boost your career.

Assessment

We recognise that individuals come from a wide range of backgrounds and experiences, so we use a variety of assessment strategies on our courses.

In Archaeology, assessment is carried out using wide-range of approaches, including written assignments, coursework, essays and reports. There are a few exams throughout the course but these often include



analysis of provided source material, either text or images. You will also carry out a small number of oral presentations, produce portfolios of research material, and undertake some practical assessments.

Support

Studying at BGU is a student-centred experience. Staff and students work together in a friendly and supportive atmosphere as part of an intimate campus community. You will know every member of staff personally and feel confident approaching them for help and advice, and staff members will recognise you, not just by sight, but as an individual with unique talents and interests. We will be there to support you, personally and academically, from induction to graduation.

“

I felt the university had a calming feeling, it almost felt like home which I loved and knew I would settle right in.”

Cameron

Primary Education
with QTS





Your future

Our students have excellent rates of employability when they graduate from BGU, which is great news for you as it means that you can study for a degree knowing that your future is in safe hands. Our employability rates are extremely important to us here at BGU, which is why we offer placement opportunities as an integral part of our courses.

As well as learning a number of highly practical skills,

Archaeology also teaches you how to assemble and assess evidence, analyse data and present and defend your views – all of which are highly sought-after by employers upon graduation. Possible future careers for Archaeology graduates may include Commercial Archaeologist, Heritage Consultant, Archivist, Researcher, Museum education and outreach, or Editorial work or journalism.



Take a look at
what qualities
and skills you'll
develop as a
BGU student
[bishopg.ac.uk/
graduate-attri
butes](https://bishopg.ac.uk/graduate-attributes)

“

I know that when the time draws nearer, BGU has a tremendous array of people I can talk to about my future who will have great advice and help me to come to the right decision. Since BGU has such a high employment rate for graduates, I know that whatever I choose to do BGU will help and support me in getting that role.”

Rebecca

History



Why BGU?

Here at BGU we've been providing first-class education to students for over 150 years. We're based in the heart of historic Lincoln, a beautiful and extremely student-friendly city.

Navigating around Lincoln on foot is simple, from the cobbled streets uphill to the modern city centre and waterfront downhill.

We're located uphill on an attractive, leafy campus just a few minutes' walk from Lincoln's medieval Cathedral, Castle and Bailgate area.

With plenty of live entertainment, cultural attractions and nightlife hotspots, there's plenty to keep you entertained, uphill and downhill.

Visit **bishopg.ac.uk/lincoln** to find out what's on offer in Lincoln.



“

BGU was always my first choice when considering universities. Everything about it is beautiful, from the leafy green trees to red brick buildings – and everything on the inside is just amazing.”

Sian

English Literature

As a single-site campus, just about everything you need is close by, whether it be your tutors, your friends, your lectures or the places in which you like to relax.

Our students are some of the happiest in the UK, which is incredibly important to us. We really care about our students and aim to support them all of the way through their studies, from application to graduation.

People often say that there's something special about BGU, that the people really care. There's a warm and friendly feel to life here, and we do everything possible to look after our students however we can.

Studying as part of a close-knit community, you'll get to know staff personally and feel confident in being able to approach them for help and

Explore what we have to offer on our campus at bishopg.ac.uk/campus

“

I came here on an Open Day and really loved it.

My first impression at the Open Day was that I really liked it because it was smaller – you go to some universities and they are really massive, scary big city campuses, but here I felt really comfortable.”

Hayley

Education Studies



advice. Staff will recognise you - not just by sight but as an individual with unique talents, interests and needs. We'll be there to support you, academically and personally, from the day you start until long after you leave.

Life after BGU is extremely important and we offer many different methods

of support for your future career. This, alongside our talented graduates, is one of the reasons that we consistently achieve impressive employability figures.

This is great news for you as you'll be able to study at BGU knowing that your education is in safe hands!

There's no better way to really get a feel for what BGU has to offer than by coming to visit us. To book your place now visit **bishopg.ac.uk/opensdays**



“

The family feel is exactly why people should study at BGU. BGU becomes your home regardless of your age or background. In fact, I felt such a connection with the University on my first visit that I went to five Open Days before I started my BA. I wanted to be part of BGU straight away and I know it will stay with me forever.”

Kate

Drama in the Community
& MA in Education

What happens next?

Open Days

So you've found a course you're interested in - what next? We feel very strongly that coming along to visit us on an Open Day is the very best way to find out everything about BGU.

A BGU Open Day is designed with you in mind, to give you a taste of what it's like to live, study and work here. We try to make everything as easy as possible for you, so you can relax and enjoy the day. You'll have the chance to explore the campus and surrounding area,

speaking to members of academic staff about the courses you're interested in, looking around our accommodation, and getting any questions you may have answered.

Book your place on our next Open Day now - visit **www.bishopg.ac.uk/opendays**

If you think you'd like to apply, need more information or just want to speak to somebody about your options, contact our Enquiries team by calling **01522 583658** or emailing **enquiries@bishopg.ac.uk**




Ready to apply? Brilliant. We can't wait to receive your application! For the majority of our courses you will apply through UCAS – visit **www.bishopg.ac.uk** for all the information you will need. And don't worry – if you need help with anything, from UCAS scores to personal statements, we're here to help. Our dedicated team are ready to answer your queries and questions.

The contents of this booklet are correct at the time of going to print (January 2020). For full and up-to-date information on all of our courses, visit **bishopg.ac.uk**

Where are we?



Airports close to BGU

-  Humberside
-  Doncaster
-  Nottingham East Midlands

Where	Road	Rail
Sheffield	55 miles	1hr 20m
Nottingham	39 miles	55m
Leeds	77 miles	2hrs
York	69 miles	1hr 45m
London	144 miles	2hrs

BISHOP GROSSETESTE UNIVERSITY
LONGDALES ROAD
LINCOLN
UNITED KINGDOM
LN1 3DY

www.bishopg.ac.uk
Telephone (01522) 583658
enquiries@bishopg.ac.uk

“

I'd say the best thing
about BGU for me
is the course. I was
never good at exams
and I hated school
all the way through,
but now I've come to
university I've been
much happier and I've
done better than I ever
thought possible.”

Georgina
Theology

@BGULincoln

