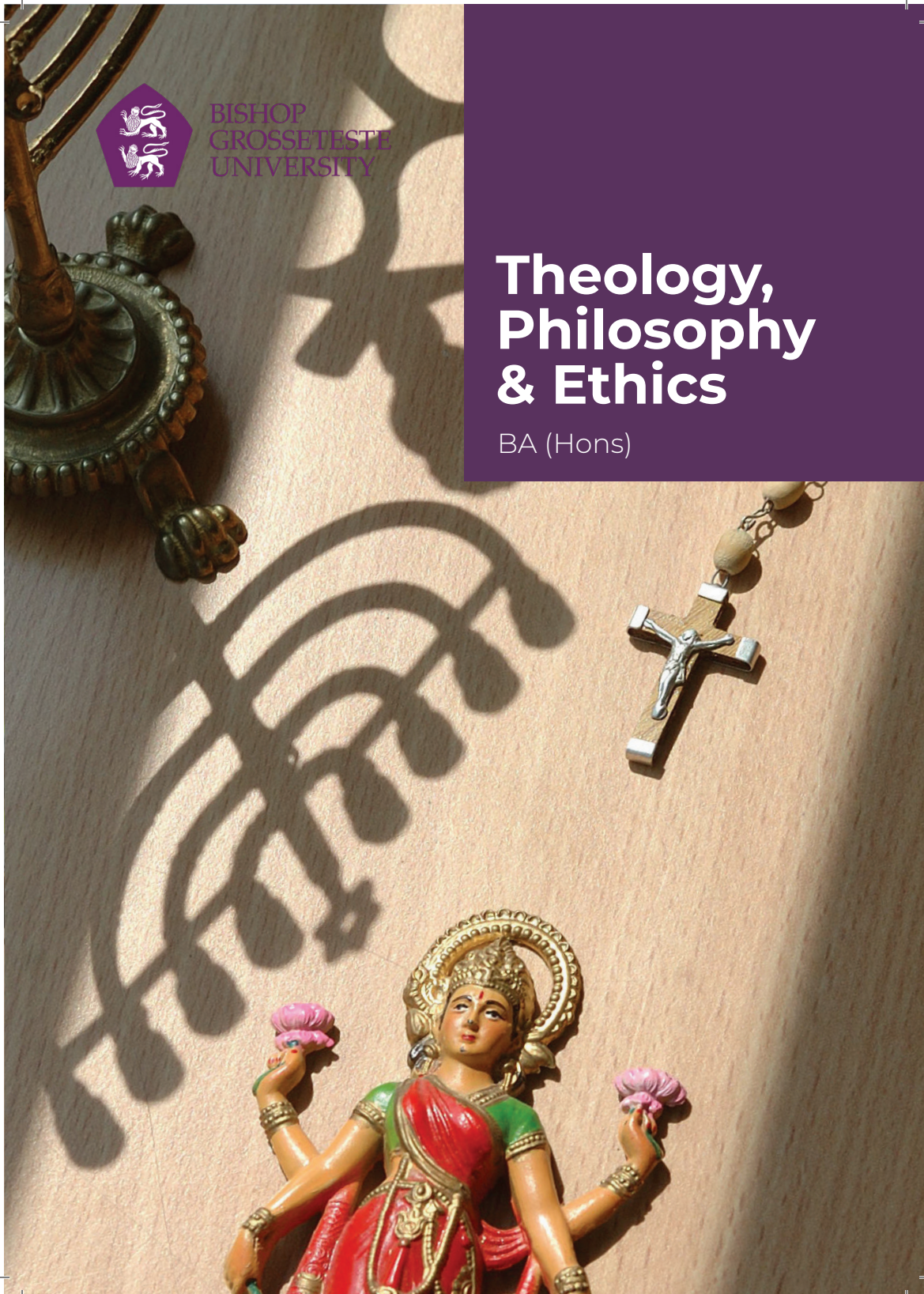




BISHOP  
GROSSETESTE  
UNIVERSITY

# Theology, Philosophy & Ethics

BA (Hons)



# Why study Theology, Philosophy & Ethics at BCU?

A forward thinking and issue-led degree which offers you the opportunity to address and debate difficult and sometimes controversial moral, ethical and philosophical issues of our time.

---

Excellent international travel opportunities, helping to boost your employability prospects.

---

Choose your approach to study, undertake a fact-based and objective approach or an approach that allows you to explore a personal faith.

---

Get hands-on and explore a wide range of religions, visit religious sites, meet new people and experience a variety of religious cultures through practical methods.



# Hello

## CONTENTS

<b>THEOLOGY, PHILOSOPHY &amp; ETHICS AT BGU</b>	<b>4</b>
<b>MODULES</b>	<b>6</b>
<b>WHAT WE OFFER</b>	<b>10</b>
<b>YOUR FUTURE</b>	<b>12</b>
<b>WHY BGU?</b>	<b>14</b>
<b>WHAT HAPPENS NEXT?</b>	<b>18</b>
<b>WHERE ARE WE?</b>	<b>19</b>

# Theology, Philosophy & Ethics at BGU

Whether you describe yourself as agnostic, atheist or a firm believer, if you have a passionate interest in the ethical, political, philosophical and religious issues of our time, this course is perfect for you. Here at BGU we can look back on many years of experience in teaching Religious Studies, Philosophy and Theology.

Get ready to look at recent trends in theology alongside the implications of scientific discovery, exploring religious debate together with arguments for atheism and for the existence of God. You'll

also explore other key events and issues related to terrorism, race, gender and sexuality. We designed this degree to bring the oldest of academic subjects firmly into the present day – combining the richness of ancient tradition with the relevance and freshness of a 21st-century subject.

Throughout the course you'll develop your curiosity and fascination about different religious cultures, learning from hands-on experience and developing research skills and critical evaluation skills.

For full details of all of our courses, including combinations, module details, entry requirements and much more, visit [bishopg.ac.uk/courses](http://bishopg.ac.uk/courses)







I like the range of topics that we cover. It's so broad - we do bits of history, philosophy and ethics, and the social side of things. I love the range of topics we cover and that we have choice in our assignments to study what we want. This means we can really range in on what we're interested in."

**Chloe**

Theology, Philosophy & Ethics

## KEY FACTS

**AWARD:** BA (Hons)  
Single or Joint Honours

**DURATION:** 3 years full-time

**START DATE:** September

**TYPICAL OFFER:**  
96 - 112 UCAS tariff points

**INSTITUTION CODE:** B38



“

The best thing about BGU is that you are part of a family, there is such a sense of family and connectedness.”

**Sam**

Archaeology and History

## Theology, Philosophy & Ethics modules

At BGU you can study Theology, Philosophy & Ethics as a **single** or **joint** honours degree, giving you an in-depth knowledge of the subject. Depending on your year of entry, options and any potential course combinations, you may study some or all of the following modules in Theology, Philosophy & Ethics at BGU.

For full details of all of our courses, including combinations, module details, entry requirements and much more, visit [bishopg.ac.uk/courses](http://bishopg.ac.uk/courses)

## Year 1

### **Ethics**

You will critically evaluate the Bible an ethical resource and the Church as an ethical community as well as a broad range of philosophical commentators both Ancient and Modern, such as Plato, Aristotle, Kant, Mill and MacIntyre. This module allows you to specifically explore issues in economics and social justice, work and money, sexual ethics, medical ethics, warfare, and the environment.

### **Brief History Of Thinking**

Studying this module will provide a review of the ancient European tradition through the medium of philosophy as it examines the contributions of key thinkers to important areas of thought such as Ethics, the existence of God, reason, government and education. You will cover key thinkers such the Socrates, Plato, Aristotle through to the modern age with Descartes, Marx and Satre, examining their philosophical contributions and the implications of their thought.

### **Christianity, The First 2,000 Years**

This module covers a broad sweep of Christian history, covering important foundation stages, personalities and concepts attached to the historical and theological development of Christianity from the Early Church, through the middles-ages and the Reformations to the modern age. It will look at the contributions to theology by some of outstanding thinkers such as Augustine of Hippo, Aquinas and Luther, as well as modern theologians such as Barth and Rahner.

### **The World's Religions**

This module explores the history and beliefs of Buddhism, Christianity, Hinduism, Judaism, Islam and Sikhism, as well as some of the ways in which those beliefs and assumptions are expressed in everyday life and practice. You will be offered first-hand experience of the various faiths through visits to places of worship, meetings with faith-adherents, guest speakers and the use of various sources produced from within those faith traditions.

## Year 2

### **Green Theology**

This module will explore the historical relationship between the World's main religions and the environment, asking whether these religious organisations contributed to the problems facing our planet since the advent of industrialisation and whether they can now contribute to a solution. It will explore sacred text from the Jewish Torah, the Bible, the Koran as well as the Eastern texts from Hinduism and Judaism in order to determine their significance in terms of Green issues.

## **Women And Faiths**

You will cover a broad sweep of the last 2,000 years of major world religion's attitudes towards and treatment of women and in particular that of Christianity. You will look at the contributions to theology and spirituality of some outstanding women; scriptural women such as Esther, Deborah, Mary mother of Jesus and Mary Magdalene, historical women such as Hildegard of Bingen, Julian of Norwich, Teresa of Avila and the more modern contributions made by feminist theologians such as Mary Daly and Rosemary Radford Ruether.

## **God And Science**

The relationship between these two disciplines, with their questions of compatibility or exclusivity, form a pivotal issue not just with regard to theology and society, but with regard to our contemporary society in general. This module explores models of the relationship between science and religion, and the consequences of this work for key Christian concepts such as creation, providence and miracle, freewill, time and eternity, the nature of human beings, natural and revealed theology.

## **Religion At The Fringes, Cults, Sects And The New Age**

You will explore selected accounts of psychic and paranormal activity in the UK and elsewhere, considering popular, scientific and theological explanations for these phenomena. Historical mainstream and alternative religious teachings about angels, spirits, miracles, mystical experiences etc are explored, and a study made of established mystery cults and sects, and the conspiracy theories which have often surrounded them.

## **Holocaust Philosophy And Education**

This module covers both critical approaches to understanding holocaust education and the ways in which it is delivered in contemporary society. It explores major concepts including: the relationship between perpetrators, rescuers, bystanders and victims; anti-Semitism at key points in British and European history; filmographic perspectives on Judaism, anti-Semitism and the Holocaust; the socio-political context surrounding various holocausts; wider aspects of the conflagration; and critical and pedagogic approaches to exploring holocausts in contemporary learning settings, including through the school curriculum and Holocaust Memorial Day

## **Religion, Race And Sexuality**

Religion has not always had a positive encounter with either sexuality or racial minorities, and these encounters continue to be an area that is attached with great importance. By examining political theologies from core thinkers such as Gutierrez, Loades and Cone, this module will offer you opportunities to encounter issues of poverty, sexuality powerlessness and liberative theologies, including Latin American, Black theology, Feminist theology, Gay theology, and Green theology.



## Year 3

### Religion, War And Terrorism

This module will explore the issues raised by modern conflict, war and terrorism in order to discuss their implications for theology – in particular through exploring the historical relationship between Christianity and acts of political violence, and examining Islam, Judaism and Hindu responses to politics, violence and the world. Various responses of religious individuals will be discussed; such as Martin Luther King, Ghandi, and Malcolm X to political and social problems.

### Media And Message

Film, cartoon, radio and music are important facets of contemporary communication and as such plays a role in modern society that is ever growing in importance – no contemporary study of society would be complete without an examination of this form media. This module provides an opportunity to reflect on the way in which the Christian religion and Theology in general is represented in, influences, and affects media products.

### Asian Beliefs

The module explores the history and beliefs of major Indo-Chinese religions, and some of the ways in which their beliefs and assumptions are expressed in everyday life and practice. In exploring a range of expressions within the different religions, the module will seek to offer a balance between classical and subsequent articulations, and studies of the religions within their traditional environments, and expressions of the same religion within contemporary Britain.

### Cogito Ergo Sum: Questions And Answers

After preliminary consideration of what is meant by 'modernity', 'religion' and 'atheism', you will examine the thought of some central thinkers, theistic, agnostic and atheistic, and the implications of their thought for religious questions. Some of the most central themes in Enlightenment and post Enlightenment Western religious and atheistic philosophical debates will be examined and evaluated in order to engage students with both the history and the latest developments in core religious, philosophical and ethical issues.

### Dissertation

This module requires you to devise and undertake a substantial dissertation on a subject of interest to you, and to prepare in written form an abstract and working bibliography. It requires you to practice and develop all of the research skills imparted earlier in your studies and apply them in a more independent manner, deepening and refining your knowledge of your specialist area.

# What we offer

## **Delivery**

There is no one-size-fits-all method of teaching at BGU – we shape our methods to suit each subject and each group, combining the best aspects of traditional university teaching with innovative techniques to promote student participation and interactivity.

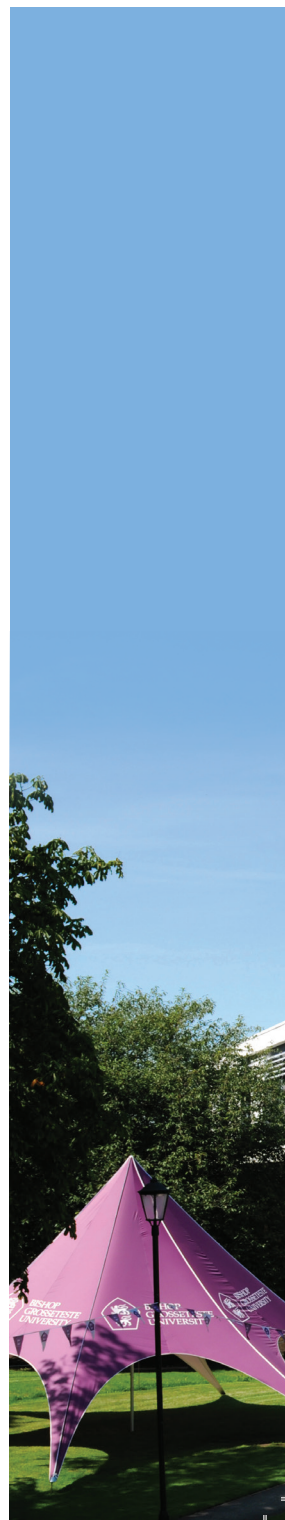
You will be taught in a variety of ways, from lectures, tutorials and seminars, to practical workshops, coursework, work-based placements or even field visits. Small group seminars and workshops will provide you with an opportunity to review issues raised in lectures, and you will be expected to carry out independent study.

Placements are a key part of degree study at BGU. They provide an enriching learning experience for you to apply the skills and knowledge you will gain from your course and, in doing so, give valuable real-world experience to boost your career.

## **Assessment**

We recognise that individuals come from a wide range of backgrounds and experiences, so we use a variety of assessment strategies on our courses.

On our Theology courses, we believe that we have an imaginative approach to assessment that allows us to utilise your strengths. We assess our students using a wide range of methods which include written assignments, paired and single presentations, research-based dissertations, files of work and exams. A good deal of continual assessment and easy access to our course tutors means that we are in a strong position to get the best possible results from our students.



### **Support**

Studying at BGU is a student centred experience. Staff and students work together in a friendly and supportive atmosphere as part of an intimate campus community. You will know every member of staff personally and feel confident approaching them for help and advice, and staff members will recognise you, not just by sight, but as an individual with unique talents and interests. We will be there to support you, personally and academically, from induction to graduation.

“

**I felt the university had a calming feeling, it almost felt like home which I loved and knew I would settle right in.”**

**Cameron**

Primary Education  
with QTS





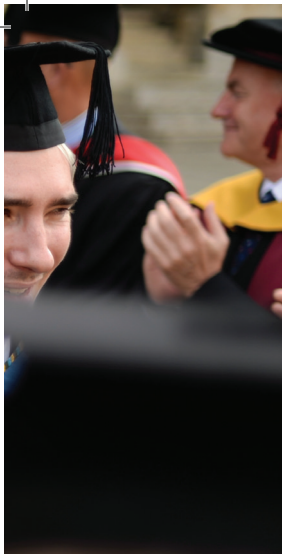
# Your future

Our students have excellent rates of employability when they graduate from BGU, which is great news for you as it means that you can study for a degree knowing that your future is in safe hands. Our employability rates are extremely important to us here at BGU, which is why we offer placement opportunities as an integral part of our courses.

Many Theology students will pursue careers directly related to the disciplines of Theology, Ethics and Religious Studies, in education and schools. However, graduates of this course are highly skilled individuals fully prepared to pursue a wide variety of careers in other fields, such as Community Work, Counselling, Policing,

Librarianship, Social Work, work in the third sector, Politics, Museum Work, Education Officers attached to religious buildings or organisations and Media work. Specialised modules and the ability to choose individual routes through our programme will prepare you for whatever career might best suit your interests. As well as an in-depth understanding of ethical and theological issues, you will gain a wide range of transferable skills which will prepare you for further study or employment. Possible future careers for Theology, Philosophy & Ethics graduates may include work as an RE Teacher/Primary specialist, Theology lecturer, Social or Youth work, Politics and Policy planning or Museum work.





Take a look at  
what qualities  
and skills you'll  
develop as a  
BGU student  
[bishopg.ac.uk/  
graduate-attri  
butes](https://bishopg.ac.uk/graduate-attributes)

“

I know that when the time draws nearer, BGU has a tremendous array of people I can talk to about my future who will have great advice and help me to come to the right decision. Since BGU has such a high employment rate for graduates, I know that whatever I choose to do BGU will help and support me in getting that role.”

**Rebecca**

History



## Why BGU?

Here at BGU we've been providing first-class education to students for over 150 years. We're based in the heart of historic Lincoln, a beautiful and extremely student-friendly city.

Navigating around Lincoln on foot is simple, from the cobbled streets uphill to the modern city centre and waterfront downhill.

We're located uphill on an attractive, leafy campus just a few minutes' walk from Lincoln's medieval Cathedral, Castle and Bailgate area.

With plenty of live entertainment, cultural attractions and nightlife hotspots, there's plenty to keep you entertained, uphill and downhill.

Visit [bishopg.ac.uk/lincoln](https://www.bishopg.ac.uk/lincoln) to find out what's on offer in Lincoln.



“

BGU was always my first choice when considering universities. Everything about it is beautiful, from the leafy green trees to red brick buildings – and everything on the inside is just amazing.”

**Sian**

English Literature

As a single-site campus, just about everything you need is close by, whether it be your tutors, your friends, your lectures or the places in which you like to relax.

Our students are some of the happiest in the UK, which is incredibly important to us. We really care about our students and aim to support them all of the way through their studies, from application to graduation.

People often say that there's something special about BGU, that the people really care. There's a warm and friendly feel to life here, and we do everything possible to look after our students however we can.

Studying as part of a close-knit community, you'll get to know staff personally and feel confident in being able to approach them for help and

Explore what we have to offer on our campus at [bishopg.ac.uk/campus](https://bishopg.ac.uk/campus)

“

I came here on an Open Day and really loved it. My first impression at the Open Day was that I really liked it because it was smaller – you go to some universities and they are really massive, scary big city campuses, but here I felt really comfortable.”

**Hayley**  
Education Studies



advice. Staff will recognise you - not just by sight but as an individual with unique talents, interests and needs. We'll be there to support you, academically and personally, from the day you start until long after you leave.

Life after BGU is extremely important and we offer many different methods

of support for your future career. This, alongside our talented graduates, is one of the reasons that we consistently achieve impressive employability figures.

This is great news for you as you'll be able to study at BGU knowing that your education is in safe hands!

There's no better way to really get a feel for what BGU has to offer than by coming to visit us. To book your place now visit **bishopg.ac.uk/opensdays**





The family feel is exactly why people should study at BGU. BGU becomes your home regardless of your age or background. In fact, I felt such a connection with the University on my first visit that I went to five Open Days before I started my BA. I wanted to be part of BGU straight away and I know it will stay with me forever.”

**Kate**

Drama in the Community  
& MA in Education

# What happens next?

## Open Days

So you've found a course you're interested in - what next? We feel very strongly that coming along to visit us on an Open Day is the very best way to find out everything about BGU.

A BGU Open Day is designed with you in mind, to give you a taste of what it's like to live, study and work here. We try to make everything as easy as possible for you, so you can relax and enjoy the day. You'll have the chance to explore the campus and surrounding area,

speak to members of academic staff about the courses you're interested in, look around our accommodation, and get any questions you may have answered.

Book your place on our next Open Day now - visit **www.bishopg.ac.uk/opendays**

If you think you'd like to apply, need more information or just want to speak to somebody about your options, contact our Enquiries team by calling **01522 583658** or emailing **enquiries@bishopg.ac.uk**




**Ready to apply?** Brilliant. We can't wait to receive your application! For the majority of our courses you will apply through UCAS – visit **www.bishopg.ac.uk** for all the information you will need. And don't worry – if you need help with anything, from UCAS scores to personal statements, we're here to help. Our dedicated team are ready to answer your queries and questions.

The contents of this booklet are correct at the time of going to print (January 2020). For full and up-to-date information on all of our courses, visit **bishopg.ac.uk**

# Where are we?



## Airports close to BGU

-  Humberside
-  Doncaster
-  Nottingham East Midlands

Where	Road	Rail
Sheffield	55 miles	1hr 20m
Nottingham	39 miles	55m
Leeds	77 miles	2hrs
York	69 miles	1hr 45m
London	144 miles	2hrs

BISHOP GROSSETESTE UNIVERSITY  
LONGDALES ROAD  
LINCOLN  
UNITED KINGDOM  
LN1 3DY

[www.bishopg.ac.uk](http://www.bishopg.ac.uk)

Telephone: (01522) 583658

[enquiries@bishopg.ac.uk](mailto:enquiries@bishopg.ac.uk)

“

I'd say the best thing  
about BGU for me  
is the course. I was  
never good at exams  
and I hated school  
all the way through,  
but now I've come to  
university I've been  
much happier and I've  
done better than I ever  
thought possible.”

Georgina  
Theology

@BGULincoln

