



BISHOP
GROSSETESTE
UNIVERSITY

Sociology

BA (Hons)



Why study Sociology at BGU?

Highly interactive and practical hands-on degree where you are taught in real world settings. Less theory based work than other similar courses.

Assignments are driven by your practical skills and applied to real world situations, as you will undertake client briefs.

Collaborative work with other students is encouraged and standard classroom settings are replaced with highly practical and interactive learning.

Encouraging your personal development, this course offers you the opportunity to grow and gain self-confidence as you advance your oral and presentation skills.



Hello

CONTENTS

SOCIOLOGY AT BGU	4
MODULES	6
WHAT WE OFFER	10
YOUR FUTURE	12
WHY BGU?	14
WHAT HAPPENS NEXT?	18
WHERE ARE WE?	19

Sociology at BGU

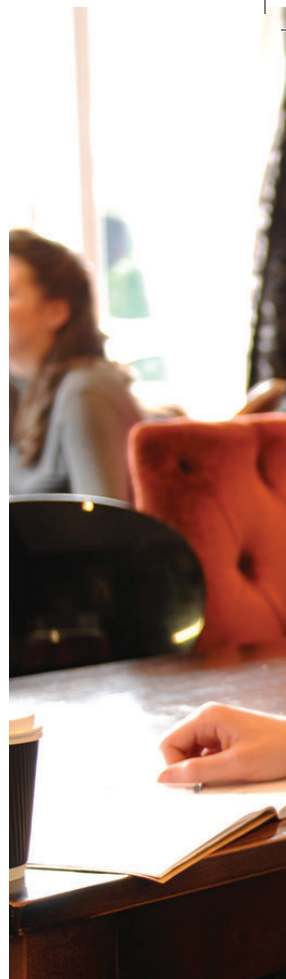
BGU's Sociology programme provides a comprehensive and exciting introduction to the study of all aspects of the social world. The course takes you on a journey from the 19th-century foundations of the discipline through to the social, cultural and political changes that are reshaping our globalising world. Along the way, you'll see how sociological thinking is crucial for people who want to understand the world around them, whether as students, tuition-fee payers, citizens, employees (or via any of their other social roles).

The course showcases sociology's relevance beyond the confines of academia. Sociology at BGU will provide you with state of the art understanding of key classical and contemporary social, cultural and sociology theories

as well as rigorous training in social research methods that are in demand from employers. On completion of this course, you'll leave us equipped with a wide range of transferable skills that work successfully in an array of public, private and third-sector settings.

At BGU our commitment to small group teaching and one-to-one supervisions means that you'll never be an anonymous face in a large lecture theatre. Over the course of your degree, you'll benefit immeasurably from such direct access to academics. We believe that students learn best when they're being taught by staff who are actively engaged in high-quality research. That's why our staff have drawn upon their own extensive research experiences to create this degree programme.

For full details of all of our courses, including combinations, module details, entry requirements and much more, visit bishopg.ac.uk/courses





“

I saw an advert for BGU online and when I clicked on it I knew it was there I wanted to go. BGU were really supportive and helpful - they say that you get a feeling when you find the right place, and I knew straight away it was BGU.”

Holly

Early Childhood Studies

KEY FACTS

AWARD: BA (Hons)
Single or Joint Honours

DURATION: 3 years full-time

START DATE: September

TYPICAL OFFER:
96 – 112 UCAS tariff points

INSTITUTION CODE: B38



“

The best thing about BGU is that you are part of a family, there is such a sense of family and connectedness.”

Sam

Archaeology and History

Sociology modules

At BGU you can study Sociology as a **single** or **joint** honours degree, giving you an in-depth knowledge of the subject. Depending on your year of entry, options and any potential course combinations, you may study some or all of the following modules in Sociology at BGU.

For full details of all of our courses, including combinations, module details, entry requirements and much more, visit bishopg.ac.uk/courses

Year 1

Sociology Of The Moving Image: Film And Television

During this module, you will become familiar with methods for reading films/television programmes sociologically; that is, as cultural artefacts that can be made to reveal a great deal about the particular economic, political, cultural and social contexts within which they were produced and consumed.

Social Research Skills: Texts And Interactions

A diverse range of qualitative and quantitative research methods for studying two key types of social data (i.e. textual and interactional data) will be discussed, as will their respective strengths and weaknesses. You will also use guided independent study time to produce five minute oral and visual presentations which will be presented to the rest of the class during an assessment session.

What Is (The Point Of) Sociology?

This module is designed to give you a positive view of the impact that the social sciences have had, and will continue to have, on modern societies, polities, cultures and economies. A broad range of classical and contemporary social and sociological theories are presented with the aim of showcasing the power, promise and potential of a sociological imagination for anyone wishing to understand the world around them and their place within it.

Writing And Thinking Sociologically

You will receive an introduction to the nature of undergraduate study, and specifically undergraduate sociological study. During scheduled and independent/virtual learning sessions the course will address issues such as: using the internet as an effective research tool; taking effective notes during lectures; how to guard against plagiarism; and successful literature reviewing.



Year 2

In Dialogue: Subject Studies Across The Arts And Humanities

You will be introduced to the attractions and challenges of interdisciplinary investigation in the arts and humanities, in this case with particular reference to sociology and media studies (as broadly conceived). You will engage with materials and practices within and beyond your chosen subject(s) of study.

Advanced Social Research Skills: Online And Offline Contexts

The aim of the module is to equip you with the skills necessary to undertake empirical social research using both primary and secondary data drawn from online and offline contexts. You will also construct a research proposal suitable for your level 6 dissertation and will undertake empirical social research that draws on primary and/or secondary data.

Professional Contexts

This module will consist of five scheduled workshop sessions that will focus upon career skills and pathways. It will also include a work placement, that is designed to give you an opportunity to explore an area of work and develop (or confirm) your career planning.

Discourse And Identity: Local, National And Global Contexts

The module begins with a very broad definition of identity as something that involves the ways in which people display who they are to each other. It then examines a range of environments in which people do 'identity work': everyday conversations, institutional settings, narrative and stories, commodified encounters and various spatial locations from the local and the national, to the 'online' and 'offline'.

Public Sociology: Critical Issues In Contemporary Society

During this module, you will gain a sense of how academics have been able to influence policy debates, and learn how to apply the social science understandings developed in lectures and workshops to the critical analysis of public debates. You will also develop the ability to explain some of the ways in which their studies have wider relevance to society.

Advanced Social Thought

You will be introduced to a range of the central yet diverse theoretical approaches to the study of society that have been, and still are being developed within sociology. The module will provide you with a critical and reflexive understanding of the importance (as well as the fallibility of) modern and contemporary social and sociological theories to and for understanding and explaining social life.

Year 3

Persuasion And Communication

The aim of this module is to provide you with a general introduction to the study of persuasion, before identifying and discussing the major discursive and rhetorical approaches to the study of persuasion as something attempted by various forms of communication. The module will also include 'practical data sessions', in which you will put your analytic skills into practice on real world data.

Sociology Of The Body

The module begins by considering key social theories of the body, highlighting perspectives drawn from medical and historical sociology, medical and cultural anthropology, social and political theory and the history of science. You will then consider how those concepts and theories can be put to use 'in practice' by examining a series of case-studies drawn from every day, media and popular culture.

Surveillance And Society

You will study aspects of the chronological development of surveillance in Western Europe and North America. The module will offer you a range of teaching and learning contexts in which to build understanding of key sociological (and societal) issues.

Visual Culture, Communication And Commerce

This module is hands-on, practically-oriented and built around a form of problem based learning. Upon completion of this module, you will know how to make most types of video and poster presentations media, and you will also have developed a portfolio of content that may well assist you in entrepreneurial work in the creative and cultural industries.

Independent Study

The independent study module provides an opportunity for you to build upon and apply the key intellectual, transferable and practical skills gained at Levels 4 and 5 of the programme to an appropriate study or research project that falls within the remit of sociology. This may be carried out 'the field', or it may be library based.

Dissertation

This module will offer you a range of teaching and learning contexts in which to build and demonstrate knowledge and understanding of a key past or present topic that falls within the orbit of sociology. You will also acquire and develop intellectual skills and transferable skills that are relevant to contexts beyond academia.

What we offer

Delivery

There is no one-size-fits-all method of teaching at BGU – we shape our methods to suit each subject and each group, combining the best aspects of traditional university teaching with innovative techniques to promote student participation and interactivity.

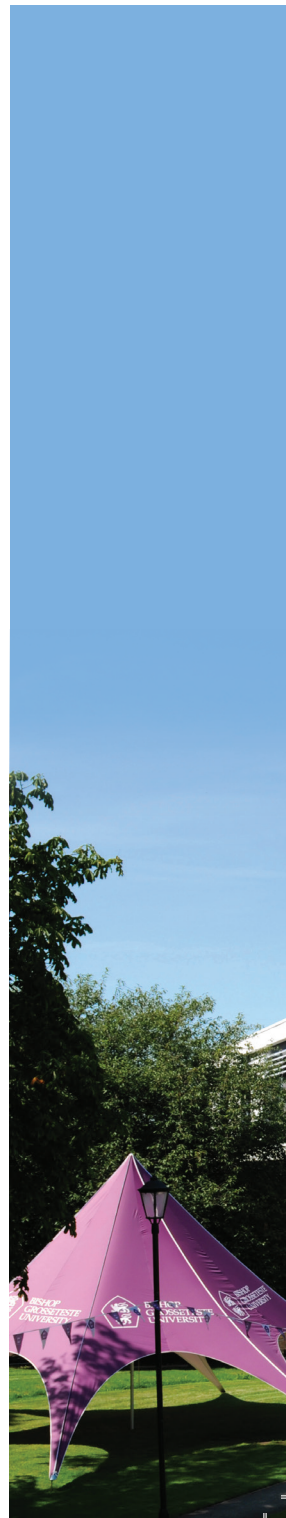
You will be taught in a variety of ways, from lectures, tutorials and seminars, to practical workshops, coursework, work-based placements or even laboratory classes. Small group seminars and workshops will provide you with an opportunity to review issues raised in lectures, and you will be expected to carry out independent study.

Placements are a key part of degree study at BGU. They provide an enriching learning experience for you to apply the skills and knowledge you will gain from your course and, in doing so, give valuable real-world experience to boost your career.

Assessment

We recognise that individuals come from a wide range of backgrounds and experiences, so we use a variety of assessment strategies on our courses.

In Sociology, we see assessment as a powerful driver of student learning and a means for demonstrating what students have learnt. We believe it's a great way to develop the employability skills that employers demand from graduates. As a result, the course incorporates a range of assessment methods which will allow you to demonstrate a wide range of skills whilst providing a selection of post-degree career paths. These assessment methods include coursework, small group work, report writing, oral presentations, multi-modal presentations (posters, videos, print), examinations and individual dissertation projects. Where appropriate, assessment tasks are designed to mimic the type of challenges faced by employees in graduate-level jobs.



Support

Studying at BGU is a student centred experience. Staff and students work together in a friendly and supportive atmosphere as part of an intimate campus community. You will know every member of staff personally and feel confident approaching them for help and advice, and staff members will recognise you, not just by sight, but as an individual with unique talents and interests. We will be there to support you, personally and academically, from induction to graduation.

“

I felt the university had a calming feeling, it almost felt like home which I loved and knew I would settle right in.”

Cameron

Primary Education
with QTS



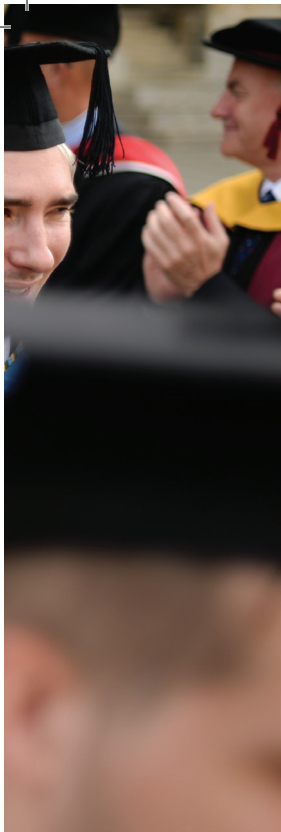


Your future

Our students have excellent rates of employability when they graduate from BGU, which is great news for you as it means that you can study for a degree knowing that your future is in safe hands. Our employability rates are extremely important to us here at BGU, which is why we offer placement opportunities as an integral part of our courses.

The wide range of graduate-levels employment related

opportunities and positions available to BGU Sociology graduates include Activism and campaigning, Advertising, Arts, Bankers (e.g. investment bankers, analysts), Charity administrators, Community and youth workers, Curators, Entrepreneurs, Film makers, Financial analysts, Journalists, Lawyers, Lecturers, Marketing, Police officers, Public relations (PR), Researchers, School and college teachers and Social workers.



Take a look at
what qualities
and skills you'll
develop as a
BGU student
[bishopg.ac.uk/
graduate-attri
butes](https://bishopg.ac.uk/graduate-attributes)

“

I know that when the time draws nearer, BGU has a tremendous array of people I can talk to about my future who will have great advice and help me to come to the right decision. Since BGU has such a high employment rate for graduates, I know that whatever I choose to do BGU will help and support me in getting that role.”

Rebecca

History



Why BGU?

Here at BGU we've been providing first-class education to students for over 150 years. We're based in the heart of historic Lincoln, a beautiful and extremely student-friendly city.

Navigating around Lincoln on foot is simple, from the cobbled streets uphill to the modern city centre and waterfront downhill.

We're located uphill on an attractive, leafy campus just a few minutes' walk from Lincoln's medieval Cathedral, Castle and Bailgate area.

With plenty of live entertainment, cultural attractions and nightlife hotspots, there's plenty to keep you entertained, uphill and downhill.

Visit [bishopg.ac.uk/lincoln](https://www.bishopg.ac.uk/lincoln) to find out what's on offer in Lincoln.



“

BGU was always my first choice when considering universities. Everything about it is beautiful, from the leafy green trees to red brick buildings – and everything on the inside is just amazing.”

Sian

English Literature

As a single-site campus, just about everything you need is close by, whether it be your tutors, your friends, your lectures or the places in which you like to relax.

Our students are some of the happiest in the UK, which is incredibly important to us. We really care about our students and aim to support them all of the way through their studies, from application to graduation.

People often say that there's something special about BGU, that the people really care. There's a warm and friendly feel to life here, and we do everything possible to look after our students however we can.

Studying as part of a close-knit community, you'll get to know staff personally and feel confident in being able to approach them for help and

Explore what we have to offer on our campus at bishopg.ac.uk/campus

“

I came here on an Open Day and really loved it. My first impression at the Open Day was that I really liked it because it was smaller – you go to some universities and they are really massive, scary big city campuses, but here I felt really comfortable.”

Hayley
Education Studies



advice. Staff will recognise you - not just by sight but as an individual with unique talents, interests and needs. We'll be there to support you, academically and personally, from the day you start until long after you leave.

Life after BGU is extremely important and we offer many different methods

of support for your future career. This, alongside our talented graduates, is one of the reasons that we consistently achieve impressive employability figures.

This is great news for you as you'll be able to study at BGU knowing that your education is in safe hands!

There's no better way to really get a feel for what BGU has to offer than by coming to visit us. To book your place now visit **bishopg.ac.uk/opensdays**



The family feel is exactly why people should study at BGU. BGU becomes your home regardless of your age or background. In fact, I felt such a connection with the University on my first visit that I went to five Open Days before I started my BA. I wanted to be part of BGU straight away and I know it will stay with me forever.”

Kate

Drama in the Community
& MA in Education

What happens next?

Open Days

So you've found a course you're interested in - what next? We feel very strongly that coming along to visit us on an Open Day is the very best way to find out everything about BGU.

A BGU Open Day is designed with you in mind, to give you a taste of what it's like to live, study and work here. We try to make everything as easy as possible for you, so you can relax and enjoy the day. You'll have the chance to explore the campus and surrounding area,

Speak to members of academic staff about the courses you're interested in, look around our accommodation, and get any questions you may have answered.

Book your place on our next Open Day now - visit **www.bishopg.ac.uk/opendays**

If you think you'd like to apply, need more information or just want to speak to somebody about your options, contact our Enquiries team by calling **01522 583658** or emailing **enquiries@bishopg.ac.uk**




Ready to apply? Brilliant. We can't wait to receive your application! For the majority of our courses you will apply through UCAS – visit **www.bishopg.ac.uk** for all the information you will need. And don't worry – if you need help with anything, from UCAS scores to personal statements, we're here to help. Our dedicated team are ready to answer your queries and questions.

The contents of this booklet are correct at the time of going to print (January 2020). For full and up-to-date information on all of our courses, visit **bishopg.ac.uk**

Where are we?



Airports close to BGU

-  Humberside
-  Doncaster
-  Nottingham East Midlands

Where	Road	Rail
Sheffield	55 miles	1hr 20m
Nottingham	39 miles	55m
Leeds	77 miles	2hrs
York	69 miles	1hr 45m
London	144 miles	2hrs

BISHOP GROSSETESTE UNIVERSITY
LONGDALES ROAD
LINCOLN
UNITED KINGDOM
LN1 3DY

www.bishopg.ac.uk

Telephone: (01522) 583658

enquiries@bishopg.ac.uk

“

I'd say the best thing
about BGU for me
is the course. I was
never good at exams
and I hated school
all the way through,
but now I've come to
university I've been
much happier and I've
done better than I ever
thought possible.”

Georgina
Theology

@BGULincoln

