



BISHOP  
GROSSETESTE  
UNIVERSITY

# Applied Drama in the Community

BA (Hons)



# Why study Applied Drama in the Community at BGU?

Use your passion for drama as  
a tool to engage others

---

Experience short community placements throughout  
the course and an extended third year community  
placement to suit your interests

---

An engaging and collaborative course that enables  
you to get to know your peers and work together  
to gain a strong sense of community

---

Excellent flexibility within the course: adapt,  
change and enhance your pathway depending  
on your interests.



# Hello

## CONTENTS

<b>APPLIED DRAMA IN THE COMMUNITY AT BGU</b>	<b>4</b>
<b>MODULES</b>	<b>6</b>
<b>WHAT WE OFFER</b>	<b>10</b>
<b>YOUR FUTURE</b>	<b>12</b>
<b>WHY BGU?</b>	<b>14</b>
<b>WHAT HAPPENS NEXT?</b>	<b>18</b>
<b>WHERE ARE WE?</b>	<b>19</b>

# Applied Drama in the Community at BGU

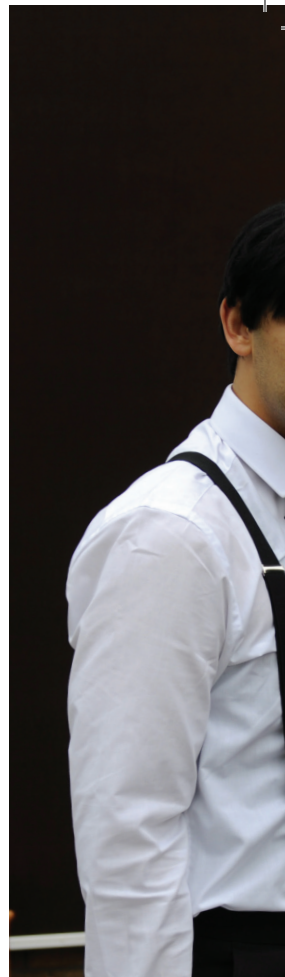
We have a passion for drama at BGU, and we want to share that passion with you. If you love drama and want to use it to make a difference in the wider world, then you'll find that our Applied Drama courses, which mix the academic and the creative, will offer you the opportunity to put your love of drama to practical use.

We encourage our students to express individuality, connect with local communities and demonstrate what they have to offer. You'll learn how to assess community needs, use your energy and imagination to respond accordingly, devise workshops and performance work, and learn organisational, fundraising and event management skills at the same time. In addition to the academic study of drama and theatre, you will find yourself working in a lively atmosphere with like-minded people on interesting projects. Many of these projects are taken into schools and other community

settings, such as youth groups, special needs units and care units, making drama work for individuals, community groups and society as a whole. You'll have the opportunity to work collaboratively in groups, acting, directing and studying theatre.

In addition to our full-time and part-time staff, we bring in specialist practitioners to all our drama degree programmes. This means that we can offer an up-to-date and relevant professional perspective. Our specialist practitioners offer students the chance to work alongside professional companies and take part in local and national festivals. Elements of enterprise and problem-solving, which are invaluable assets in the employment market, are central to our drama courses. As well as performance skills, you'll develop good communication skills, confidence and resourcefulness.

For full details of all of our courses, including combinations, module details, entry requirements and much more, visit [bishopg.ac.uk/courses](http://bishopg.ac.uk/courses)







I think my favourite module at the moment is Theatre and Studio Practice, where you get to work with a third year student in developing their performance. I got loads of advice from the student I was working with - it's really helped me to push myself forward."

**Josh**

Applied Drama in the Community

## KEY FACTS

**AWARD:** BA (Hons)  
Single or Joint Honours

**DURATION:** 3 years full-time

**START DATE:** September

**TYPICAL OFFER:**  
96 - 112 UCAS tariff points

**INSTITUTION CODE:** B38



I chose my course based on reading the prospectus and going to an open day. I liked the prospect of going out into the local community and making a difference.”

**Monika**

Applied Drama  
in the Community

## Applied Drama in the Community modules

At BGU you can study Applied Drama in the Community as a **single** or **joint** honours degree, giving you an in-depth knowledge of the subject. Depending on your year of entry, options and any potential course combinations, you may study some or all of the following modules in Applied Drama in the Community at BGU.

For full details of all of our courses, including combinations, module details, entry requirements and much more, visit [bishopg.ac.uk/courses](http://bishopg.ac.uk/courses)

# Year 1

## Community Arts And Entrepreneurship

During the course of this module there will be an analysis of key contemporary community art practitioners/theories and how to relate these to the needs of the community. You will engage in the exploration of key contemporary community art practitioners/theories in relation to the function of the arts, with specific emphasis on dance and musicianship.

## European Theatre History

This module will take a European perspective of theatre history in a social context. A representative selection of eras from the following list; Greek, medieval, Elizabethan, Restoration, Commedia dell'Arte, Melodrama, pantomime and Naturalism will be selected and exemplar texts from each of the eras will be explored.

## Acting Skills

This module is built around the principal approaches to Stanislavski's acting techniques to the creation and realisation of a character and performance. All sessions will focus on equipping you with the basic skills required to engage in acting through a series of structured exercises, games and workshops, and specific directed tasks.

## Aspects Of Applied Drama

You will consider the historical and theoretical roots of Applied Drama and work through some of its forms. Sessions will look at a selection of Applied Drama strands such as Theatre for Development, Prison Theatre, Theatre and Disability, Theatre and Welfare, Reminiscence Theatre, Therapeutic Drama, Process Drama and others to explore theory and practice across the discipline.

## Theatre And Studio Practice

This module will act as a foundation for the rest of the course and will ensure that you have a common core understanding of essential critical and practical skills. The module will reference the work of a selection of theatre practitioners and theatre styles such as Stanislavski, Artaud, Grotowski.

## Documentary And Verbatim Theatre

During the course of this module you will explore key contemporary theories relating to the functions of fact based theatre, including the work of Douglas Murray and Littlewood and work of many verbatim theatre makers such as Richard Norton-Taylor, Gillian Slovo, Moises Kauffman, Alana Valentine. The historical origins and nature of verbatim and documentary will be considered in addition to theatre design, convention and the staging of plays.

### **Cultural Narrative**

The module will explore key contemporary theories relating to the functions of narrative including the work of Zipes, Warner and Wilson. The origins and nature of drama, including ritual and narrative, will be considered in addition to the resurgence of public storytelling in current society.

### **Academic And Critical Skills**

During the course of this module you will focus on a broad range of skills required in order to function academically. This will include essay writing, presentation of work using technology, debating academically, and how to do a literature review manually and through digital media.

## **Year 2**

### **Theatre For Development**

This module is centred on theatre as a tool for social change through the use of participatory techniques. It is designed to equip you with the necessary skills to enable you to employ those techniques to facilitate positive effect within a community context.

### **Professional Context & Entrepreneurship**

This module provides you with an experience of the world of work in the form of a placement or work experience or a project with employer involvement. It enables you to apply knowledge and skills in a real-life context offering you a valuable experience to draw on when you present yourself to employers or selectors upon graduation.

### **Contemporary Theatre Contexts**

The purpose of this module is to allow you to gain detailed insights into the world of the playwright, their intentions and influences. You will implicitly consider how one's social class, context and gender influence performance work, and investigate form, structure and meaning.

### **Shakespeare In Context**

The module will work on Shakespearian text with a particular emphasis on the relevance of Shakespeare's work to a contemporary audience and its role within the National Curriculum. The whole process of staging a production will be investigated in detail, from script preparation and directing styles to set, costumes and administration.

### **Theatre In Education**

This module will allow you to extend your theoretical knowledge of the field and to enhance the understanding of workshop techniques in relation to Applied Theatre. The history and political and social background of Theatre in Education will be studied and the challenges of interventionist theatre will be explored in some detail.

## **Year 3**

### **Independent Study**

During the course of this module you will be equipped to identify an area that interests you regarding your research project on a topic of your own choosing, with support from a supervisor and/or personal tutor, plenary teaching and online learning resources. Lectures will consider issues of research design and the creation of research questions, qualitative and quantitative methodologies, data gathering (and the ethics of data collection) and analysis.

### **Community Project**

This module builds on the foundation of everything you will have learnt over the three years of the course and it is your opportunity to meld theory with practice in your own specific undertaking. You will be tasked with facilitating a relevant and appropriate event which reflects the needs of the community group in a challenging yet supportive framework.

### **Community Orientation**

During the course of this module there will be a significant amount of group discussion and exploration about ethics, health and safety, methods of negotiation and a recap of workshop skills. Discussion will take place about safeguarding, disclosure and the need for lines communication with host community groups.

### **Process Drama**

This module will include study of the major practitioners in educational drama during the past thirty years, and emerging drama teaching philosophy. Detailed consideration will be given to the place of signing, symbol and metaxis in drama teaching and the subtleties of working alongside young people in developing process drama will be practiced in the studio.



# What we offer

## Delivery

There is no one-size-fits-all method of teaching at BGU – we shape our methods to suit each subject and each group, combining the best aspects of traditional university teaching with innovative techniques to promote student participation and interactivity.

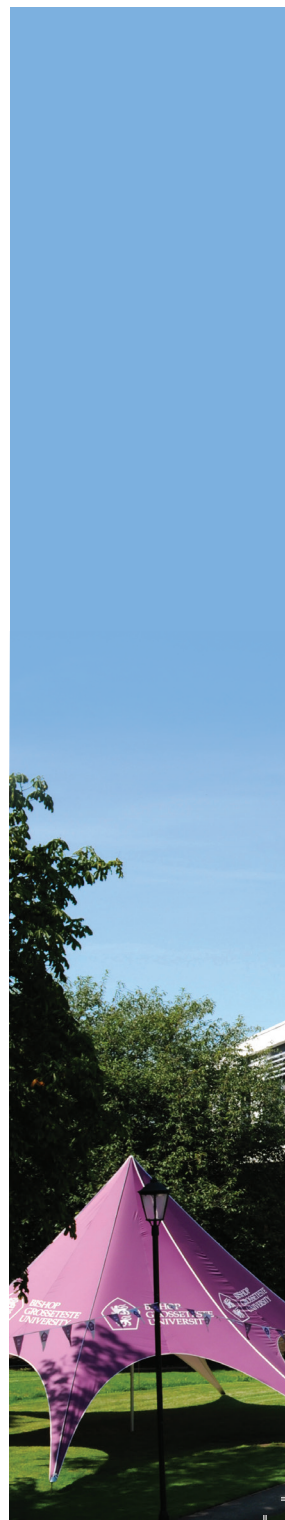
You will be taught in a variety of ways, from lectures, tutorials and seminars, to practical workshops, coursework, work-based placements or even field visits. Small group seminars and workshops will provide you with an opportunity to review issues raised in lectures, and you will be expected to carry out independent study.

Placements are a key part of degree study at BGU. They provide an enriching learning experience for you to apply the skills and knowledge you will gain from your course and, in doing so, give valuable real-world experience to boost your career.

## Assessment

We recognise that individuals come from a wide range of backgrounds and experiences, so we use a variety of assessment strategies on our courses.

We use a versatile range of assessments in Drama which reflect both the equal emphasis we place on theory and practice, and the importance we give to the future employment skills of our graduates. Theory-based assessment methods include analytical reports, student-led seminars, presentations, essays, dissertations, exhibitions of work and portfolios. More practical assessment methods may include analysed performances, group presentations, practical performances or large scale individual community placements.





### **Support**

Studying at BGU is a student-centred experience. Staff and students work together in a friendly and supportive atmosphere as part of an intimate campus community. You will know every member of staff personally and feel confident approaching them for help and advice, and staff members will recognise you, not just by sight, but as an individual with unique talents and interests. We will be there to support you, personally and academically, from induction to graduation.

“

The lecturers know me personally and are always on the look out for if anyone needs further support. The small lecture sizes allow this to take place. This is what instantly attracted me to the university.”

**Monika**

Applied Drama  
in the Community



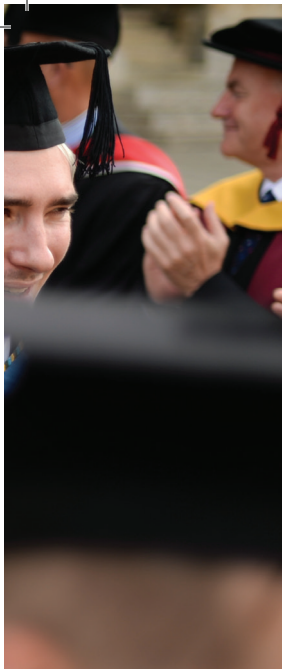


## Your future

Our students have excellent rates of employability when they graduate from BGU, which is great news for you as it means that you can study for a degree knowing that your future is in safe hands. Our employability rates are extremely important to us here at BGU, which is why we offer placement opportunities as an integral part of our courses.

Throughout our Drama courses you will acquire a number of useful skills which can be transferred to the workplace, such as good communication skills, the ability to work effectively in groups and as an

individual, good organisational and decision making skills, effective analytical skills, and the ability to apply theory to practice. Possible future careers for Applied Drama graduates could include Theatre management, Drama therapy, Teaching and academic careers, Community and mainstream theatre work, Community work (such as Special Educational Needs and mental health). All Drama graduates may also find employment in the public or private sectors, in the creative industries, within the media, tourism and leisure or with education.



Take a look at what qualities and skills you'll develop as a BGU student  
[bishopg.ac.uk/graduate-attributes](https://bishopg.ac.uk/graduate-attributes)

“

I know that when the time draws nearer, BGU has a tremendous array of people I can talk to about my future who will have great advice and help me to come to the right decision. Since BGU has such a high employment rate for graduates, I know that whatever I choose to do BGU will help and support me in getting that role.”

**Rebecca**

History





## Why BGU?

Here at BGU we've been providing first-class education to students for over 150 years. We're based in the heart of historic Lincoln, a beautiful and extremely student-friendly city.

Navigating around Lincoln on foot is simple, from the cobbled streets uphill to the modern city centre and waterfront downhill.

We're located uphill on an attractive, leafy campus just a few minutes' walk from Lincoln's medieval Cathedral, Castle and Bailgate area.

With plenty of live entertainment, cultural attractions and nightlife hotspots, there's plenty to keep you entertained, uphill and downhill.

Visit [\*\*bishopgates.ac.uk/lincoln\*\*](https://www.bishopgates.ac.uk/lincoln) to find out what's on offer in Lincoln.



“

BGU was always my first choice when considering universities. Everything about it is beautiful, from the leafy green trees to red brick buildings – and everything on the inside is just amazing.”

**Sian**

English Literature

As a single-site campus, just about everything you need is close by, whether it be your tutors, your friends, your lectures or the places in which you like to relax.

Our students are some of the happiest in the UK, which is incredibly important to us. We really care about our students and aim to support them all of the way through their studies, from application to graduation.

People often say that there's something special about BGU, that the people really care. There's a warm and friendly feel to life here, and we do everything possible to look after our students however we can.

Studying as part of a close-knit community, you'll get to know staff personally and feel confident in being able to approach them for help and

Explore what we have to offer on our campus at [bishopg.ac.uk/campus](https://bishopg.ac.uk/campus)

“

I came here on an Open Day and really loved it. My first impression at the Open Day was that I really liked it because it was smaller – you go to some universities and they are really massive, scary big city campuses, but here I felt really comfortable.”

**Hayley**  
Education Studies



advice. Staff will recognise you - not just by sight but as an individual with unique talents, interests and needs. We'll be there to support you, academically and personally, from the day you start until long after you leave.

Life after BGU is extremely important and we offer many different methods

of support for your future career. This, alongside our talented graduates, is one of the reasons that we consistently achieve impressive employability figures.

This is great news for you as you'll be able to study at BGU knowing that your education is in safe hands!

There's no better way to really get a feel for what BGU has to offer than by coming to visit us. To book your place now visit **bishopg.ac.uk/opensdays**





The family feel is exactly why people should study at BGU. BGU becomes your home regardless of your age or background. In fact, I felt such a connection with the University on my first visit that I went to five Open Days before I started my BA. I wanted to be part of BGU straight away and I know it will stay with me forever.”

**Kate**

Drama in the Community  
& MA in Education

# What happens next?

## Open Days

So you've found a course you're interested in - what next? We feel very strongly that coming along to visit us on an Open Day is the very best way to find out everything about BGU.

A BGU Open Day is designed with you in mind, to give you a taste of what it's like to live, study and work here. We try to make everything as easy as possible for you, so you can relax and enjoy the day. You'll have the chance to explore the campus and surrounding area,

Speak to members of academic staff about the courses you're interested in, look around our accommodation, and get any questions you may have answered.

Book your place on our next Open Day now - visit **www.bishopg.ac.uk/opendays**

If you think you'd like to apply, need more information or just want to speak to somebody about your options, contact our Enquiries team by calling **01522 583658** or emailing **enquiries@bishopg.ac.uk**




**Ready to apply?** Brilliant. We can't wait to receive your application! For the majority of our courses you will apply through UCAS – visit **www.bishopg.ac.uk** for all the information you will need. And don't worry – if you need help with anything, from UCAS scores to personal statements, we're here to help. Our dedicated team are ready to answer your queries and questions.

The contents of this booklet are correct at the time of going to print (January 2020). For full and up-to-date information on all of our courses, visit **bishopg.ac.uk**

# Where are we?



## Airports close to BGU

-  Humberside
-  Doncaster
-  Nottingham East Midlands

Where	Road	Rail
Sheffield	55 miles	1hr 20m
Nottingham	39 miles	55m
Leeds	77 miles	2hrs
York	69 miles	1hr 45m
London	144 miles	2hrs

BISHOP GROSSETESTE UNIVERSITY  
LONGDALES ROAD  
LINCOLN  
UNITED KINGDOM  
LN1 3DY

[www.bishopg.ac.uk](http://www.bishopg.ac.uk)

Telephone: (01522) 583658

[enquiries@bishopg.ac.uk](mailto:enquiries@bishopg.ac.uk)

“

I'd say the best thing  
about BGU for me  
is the course. I was  
never good at exams  
and I hated school  
all the way through,  
but now I've come to  
university I've been  
much happier and I've  
done better than I ever  
thought possible.”

Georgina  
Theology

@BGULincoln

